

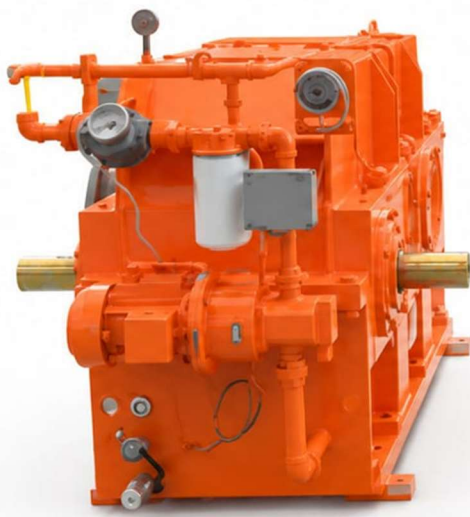


HGB Serie

special gearbox catalogue



SD
CONSULTING



HGB Series

Riduttori ad Alte Prestazioni

Struttura Prodotto

La serie HGB è una gamma modulare di riduttori a ingranaggi progettata per versatilità, efficienza economica e configurazione rapida. Dimensioni, rapporti e potenze seguono la serie geometrica R20 secondo le normative ISO 3, UNI 2016 e DIN 323. Questo catalogo fornisce informazioni generali; requisiti speciali possono essere soddisfatti su richiesta.

Ingranaggi e Alberi

Gli ingranaggi sono fatti di acciaio legato cromo-nichel-molibdeno, cementati e rettificati secondo la qualità ISO 1328 Q5–Q6. Gli ingranaggi elicoidali hanno profili modificati per ridurre l'usura da sfregamento. Gli ingranaggi conici a spirale sono rifiniti Gleason per un funzionamento fluido e silenzioso. Gli alberi sono in acciaio legato temprato e rinvenuto, dimensionati per sopportare carichi radiali e assiali elevati con una minima flessione.

Cuscinetti e Tenute

I cuscinetti a rulli conici e cilindrici di alta qualità vengono scelti con ampi margini di sicurezza. Guarnizioni combinate a labbro e a labirinto assicurano una buona protezione contro le impurità con bassa attrito per gli oli minerali.

Carcasse

Disponibile in ghisa ad alta resistenza o acciaio saldato a elettro. Lavorato con precisione dopo trattamento termico e sabbiatura, con rivestimento interno resistente all'olio e vernice esterna robusta adatta a ambienti difficili (chimico, cemento, estrazione mineraria, offshore).

Accessori e Sistemi Ausiliari

- * Temperature and vibration sensors
- * Forced lubrication systems
- * Heating cartridges for low temperatures
- * Motor and output couplings

Note Applicative

SD Consulting fornisce tutti i dati operativi al momento del preventivo (condizioni ambientali, agenti corrosivi, carichi esterni, ciclo di lavoro). Le unità vengono fornite testate con documentazione tecnica. Leggere il manuale prima della messa in servizio.

HGB Series

High-Performance Gear Units

Product Architecture

The HGB series is a modular gear reducer range designed for versatility, economic efficiency and fast configuration. Dimensions, ratios and power ratings follow the R20 geometric series according to ISO 3, UNI 2016 and DIN 323 standards. This catalogue provides general information; special requirements can be accommodated upon request.

Gears and Shafts

Gears are made of chrome-nickel-molybdenum alloy steel, case-hardened and ground to ISO 1328 quality Q5–Q6. Helical gears feature modified profiles to reduce scuffing. Spiral bevel gears are Gleason-finished for smooth, quiet operation. Shafts are quenched and tempered alloy steel, sized for high radial and axial loads with minimal deflection.

Bearings and Seals

Premium tapered and cylindrical roller bearings are selected with high safety margins. Combined lip-and-labyrinth seals ensure good protection against contaminants with low friction for mineral oils.

Housings

Available in high-strength cast iron or electro-welded steel. Precision machined after heat treatment and shot-blasting, with oil-resistant internal coating and heavy-duty external paint suitable for harsh environments (chemical, cement, mining, offshore).

Accessories and Auxiliary Systems

- * Temperature and vibration sensors
- * Forced lubrication systems
- * Heating cartridges for low temperatures
- * Motor and output couplings

Application Notes

SD Consulting provide full operating data at quotation (ambient conditions, corrosive agents, external loads, duty cycle). Units are supplied tested with technical documentation. Read the manual before commissioning.

Guida alla Selezione

Tipo di riduttore

Tre famiglie (K, S, V) basate sulla disposizione degli alberi e sul tipo di trasmissione.

Taglia e rapporto

Le tabelle di potenza mostrano i rapporti nominali i_N e la potenza ammissibile. Applica i fattori di servizio f_1 , f_2 e f_3 ai dati del processo

Capacità termica

Controlla i valori di dissipazione termica di PG1–PG3. Usa la lubrificazione forzata con raffreddatore se la convezione naturale non è sufficiente.

Selection Guide

Reducer Type

Three families (K, S, V) based on shaft arrangement and transmission type.

Size and Ratio

Power tables show nominal ratios i_N and admissible power. Apply service factors f_1 , f_2 and f_3 to process data.

Thermal Capacity

Check PG1–PG3 thermal dissipation values. Use forced lubrication with cooler if natural convection is insufficient.



Helical gearboxes

Single stage (HK1)

2 stages (HK2)

3 stages (HK3)

4 stages (HK4)

Bevel gearboxes

Bevel gearbox (BS1)

Bevel Helical gearboxes

2 stages (BS2)

3 stages (BS3)

4 stages (BS4)

Optionals

Lubrication system and lubricants

Sealing systems

Hollow shaft keying

AVAILABLE ON REQUEST

Vertical mounting position

Instrumentation

Base frame and swing base

Accessories



Service and general operating factors

Tab. 1 TYPE OF MACHINE	SERVICE FACTORS		
	DAILY HOURS OF OPERATION		
	8	16	24
AIR COMPRESSORS			
Rotary piston compressors	1.7	1.8	2
Turbo compressors	1.7	2	2.1
EXCAVATORS AND ELEVATORS			
Wheeled vehicles	1.25	1.4	1.4
Tracked vehicles	1.5	1.5	1.5
Digger bucket excavators	1.5	1.7	1.7
Bucket trolley elevators	1.5	1.7	1.7
Winches	1	1.25	1.4
CHEMICAL INDUSTRY MACHINERY			
Stirrers	1.25	1.5	1.75
Stirrers viscous liquid	1.25	1.5	1.75
STEEL WORKS			
Work table rollers		1.7	2
Wire reels		1.25	1.6
Strip reels		1.5	1.75
Roller conveyors		1.2	1.5
Long belt roller conveyors (High speed)		1.2	1.4
Long belt roller conveyors (Low speed)		1	1.25
Cropping shears		1.5	1.75
Rolling mills		1.2	1.5
Ingot or bloom transporter plant		1.75	2
Billet shears		1.5	1.75
Sheet shears		1.75	2
Trimming shears		1.2	1.5
Inverter units		1.5	1.75
Chain transporter		1.5	1.75
Manipulator		1.5	1.75
Revolving turrets		1.2	1.5
METAL WORKING MACHINERY			
Crank presses		1.75	2
Forging presses		1.75	2
Shears		1.5	1.75
Ponching presses		1.75	2
FOOD INDUSTRY MACHINERY			
Mixers	1	1.5	1.75
Packing machines	1	1.2	1.5
Centrifuge for sugar beet		1.5	1.75
Sugar cane mills		1.75	2
PAPER PRODUCTION MACHINES			
Calender rolls	1.3	1.5	1.75
Drying cylinders	1.5	1.75	2
Rolls for absorbent paper	1.5	1.75	2
Wet presses	1.5	1.75	2
Rag grinding	1.5	1.75	2
WOOD WORKING MACHINES			
Planing and moulding machines	1.25	1.5	1.75
Saws	1.2	1.4	1.6
CLOTHING INDUSTRY			
Bobbing-winding machines	1.1	1.25	1.5
Drum tanning machines	1.25	1.5	1.75
Calender rolls	1.25	1.4	1.7
Looms	1.1	1.25	1.5
MACHINES FOR PLASTIC PRODUCTION			
Extruders	1.25		1.75
Mixers	1.25		1.75
Calender rolls	1.6		2
MINING STONE AND EARTH WORKING			

Tab. 1 TYPE OF MACHINE TO BE OPERATED	f_1		
	DAILY HOURS OF OPERATION		
	8	16	24
MINING STONE AND EARTH WORKING			
Blade mills			2
Ball mills			2.2
Centrifugal mills		1.75	2
Presses for tile production		1.75	2
PUMPS			
Piston pumps	1.7	2	2.2
Centrifugal pumps (liquids)	1.25	1.4	1.5
Centrifugal pumps (liq. viscous)	1.3	1.5	1.7
Delivery pumps	1.5	1.7	2
PRESSES			
Briquetting presses	1.7	2	2
Forging presses	1.7	2	2
Eccentric presses	1.7	2	2
Folding presses	1.7	2	2
BLOWERS GENERATORS			
Axial compressors	1	1.25	1.5
Radial compressors	1	1.25	1.5
Blowers with rotating pistons	1.25	1.5	1.7
Centrifugal blowers	1	1.25	1.5
Hydraulic turbines		1.25	1.5
CONVEYORS			
Screw conveyors	1.1	1.25	1.25
Chain conveyors	1.25	1.25	1.25
Chain bucket conveyors	1.5	1.5	1.5
Slat or apron conveyors	1.5	1.5	1.5
Rubber belt conveyors (light material)	1	1.15	1.15
Rubber belt conveyors (heavy material)	1.1	1.25	1.25
Bucket conveyors	1.5	1.5	1.5
Conveyors		1.7	1.7
Chain drag ducted conveyors	1.2	1.25	1.25
Winding drums	1.5	1.7	1.7

Tab. 2 TYPE OF MOTOR	f_2
Electric motor or turbine	1
Reciprocating motor (4-6 cyl.)	1.25
Reciprocating motor (1-3 cyl.)	1.5

Tab. 3 NUMBER OF STARTUPS PER HOUR	f_3					
	TYPE OF MACHINE OPERATED					
f_1	≥ 1	$\geq 1,25$	$\geq 1,5$	$\geq 1,75$	≥ 2	$\geq 2,2$
2 ÷ 40	1,25	1,15	1,1	1,08	1,08	1,07
40 ÷ 100	1,5	1,4	1,3	1,25	1,2	1,1
100 ÷ 150	1,6	1,5	1,3	1,25	1,2	1,1
over 150	2	1,75	1,7	1,4	1,25	1,2

Tab. 4 LENGTH OF OPERATION TIME IN HOURS	f_H				
ED %	100	80	60	40	20
	1	1.2	1.4	1.6	1.8

Tab. 5 AMBIENT TEMPERATURE FACTOR f_k				
AMBIENT TEMPERATURE	REDUCER WITHOUT COOLING	COOLING WITH FAN	COOLING WITH OIL COOLER	COOLING WITH FAN AND OIL COOLER
10°C	1.12	1.14	1.12	1.12
20°C	1	1	1	1
30°C	0.88	0.9	0.92	0.94
40°C	0.75	0.8	0.82	0.84
50°C	0.63	0.7	0.8	0.82



H-BGB Series POWER RATINGS TYPE HK1

NOM. RATIO	NOM. SPEEDS 1/MIN.		SIZE OF GEAR UNIT																		
	n ₁ N	n ₂ N	80	112	125	140	160	180	200	225	250	280	320	360	400	450	500	560	630	710	
GEAR BOX RATING P1N – KW																					
1.6	1500	940	50	120	175	230	315	390	570	¹ 730	¹ 1150	¹ 1570	¹ 2100	¹ 2775							
	1000	625	36	89	130	175	230	290	400	550	805	1125	¹ 1450	¹ 2050	¹ 2790						
	750	470	28	70	102	140	190	240	310	455	665	900	1190	1520	¹ 2280	¹ 3445	¹ 4340				
1.8	1500	835	45	108	165	210	300	355	520	680	¹ 1050	¹ 1450	¹ 2025	¹ 2600							
	1000	555	32	84	120	160	220	265	370	520	750	1060	1400	¹ 1800	¹ 2620	¹ 3850					
	750	415	25	65	95	130	183	220	280	425	610	840	1135	1420	¹ 2140	¹ 3145	¹ 4030				
2	1500	750	38	104	155	192	280	320	475	615	¹ 960	¹ 1340	¹ 1850	¹ 2450							
	1000	500	26	77	110	145	200	250	342	470	700	960	1300	¹ 1600	¹ 2500	¹ 3665	¹ 4610				
	750	375	20	60	88	120	170	202	260	388	570	770	1050	1320	¹ 2000	¹ 2950	¹ 3780	¹ 4810			
2.24	1500	670	36	94	140	175	270	300	435	590	¹ 920	¹ 1240	¹ 1700	¹ 2300							
	1000	445	25	68	100	132	190	230	310	450	650	905	1200	¹ 1550	¹ 2300	¹ 3400	¹ 4275				
	750	335	19	51	82	110	160	185	230	370	520	740	980	1230	¹ 1850	¹ 2740	¹ 3500	¹ 4420	¹ 5700		
2.5	1500	600	30	78	127	160	250	275	400	540	¹ 855	¹ 1145	¹ 1580	¹ 2100							
	1000	400	20	54	92	120	175	210	280	410	605	825	1125	¹ 1430	¹ 2150	¹ 3100	¹ 4050				
	750	300	17	43	75	105	145	170	220	330	480	670	910	1140	¹ 1750	¹ 2485	¹ 3300	¹ 4100	¹ 5300	¹ 6800	
2.8	1500	535	26	70	112	146	220	250	365	490	790	1050	¹ 1400	¹ 1900							
	1000	360	19	45	80	110	160	192	260	370	560	750	1000	1300	¹ 1940	¹ 2900	¹ 3700				
	750	270	15	37	60	95	135	156	200	300	450	610	825	1060	1550	2350	¹ 3050	¹ 3815	¹ 4950	¹ 6450	
3.15	1500	475	22	63	95	133	200	230	330	450	740	970	1300	¹ 1700	¹ 2410	¹ 3500	¹ 4500				
	1000	315	15	43	65	100	145	175	240	345	510	685	920	1180	¹ 1750	¹ 2650	¹ 3400	¹ 5100			
	750	235	12	35	50	85	115	143	185	285	410	575	760	965	1420	2150	¹ 2745	¹ 3450	¹ 4600	¹ 6000	
3.55	1500	425	20	57	90	121	192	210	300	435	680	900	1250	¹ 1560	¹ 2250	¹ 3300	¹ 4150				
	1000	280	13	40	62	90	135	160	225	330	480	630	850	1130	1645	¹ 2440	¹ 3100	¹ 4650			
	750	210	11	32	47	70	100	131	175	270	365	515	710	915	1350	2000	2510	¹ 3200	¹ 4300	¹ 5590	
4	1500	375	15	52	75	106	160	190	275	420	630	830	1150	1400	2100	¹ 3000	¹ 3700				
	1000	250	11	35	51	64	115	138	212	305	450	590	790	1020	1500	2200	¹ 2740	¹ 4230			
	750	187	8	28	40	56	85	108	160	260	335	480	660	820	1210	1795	¹ 2250	¹ 2900	¹ 4000	¹ 5200	
4.5	1500	335	14	36	55	90	140	173	250	380	550	790	1100	1250	1850	¹ 2550	¹ 3280	¹ 5170			
	1000	220	10	25	39	54	100	132	196	280	380	550	750	920	1240	1790	¹ 2480	¹ 3850			
	750	166	7	20	28	47	75	105	140	220	290	435	610	735	960	1400	1950	¹ 2800	¹ 3700	¹ 4810	
5	1500	300	13	33	53	78	125	140	220	365	477	670	980	1120	1700	2450	¹ 3090	¹ 4660			
	1000	200	9	22.5	37	46	90	95	181	263	340	480	690	830	1200	1740	2300	¹ 3300			
	750	150	6	18	27	40	65	77	110	190	260	360	540	660	900	1345	1750	2540	¹ 3450	¹ 4485	
5.6	1500	270		30	42	69	104	130	200	312	415	560	880	1000	1510	2035	2740	¹ 3930			
	1000	180		20.5	30	41	80	90	167	210	290	405	590	750	1050	1375	1850	2700			
	750	134		16	22	34	56	70	103	150	215	310	450	590	800	1045	1400	2070	3100	4030	
6.3	1500	240		23	40	60	85	120	160	240	340	485	725	900	1230	1850	2180	¹ 3150			
	1000	160		16	28	33	65	83	155	170	230	355	480	675	845	1245	1470	2150			
	750	120		13	20	29	48	63	90	130	175	270	360	515	650	950	1130	1650	2800	3640	



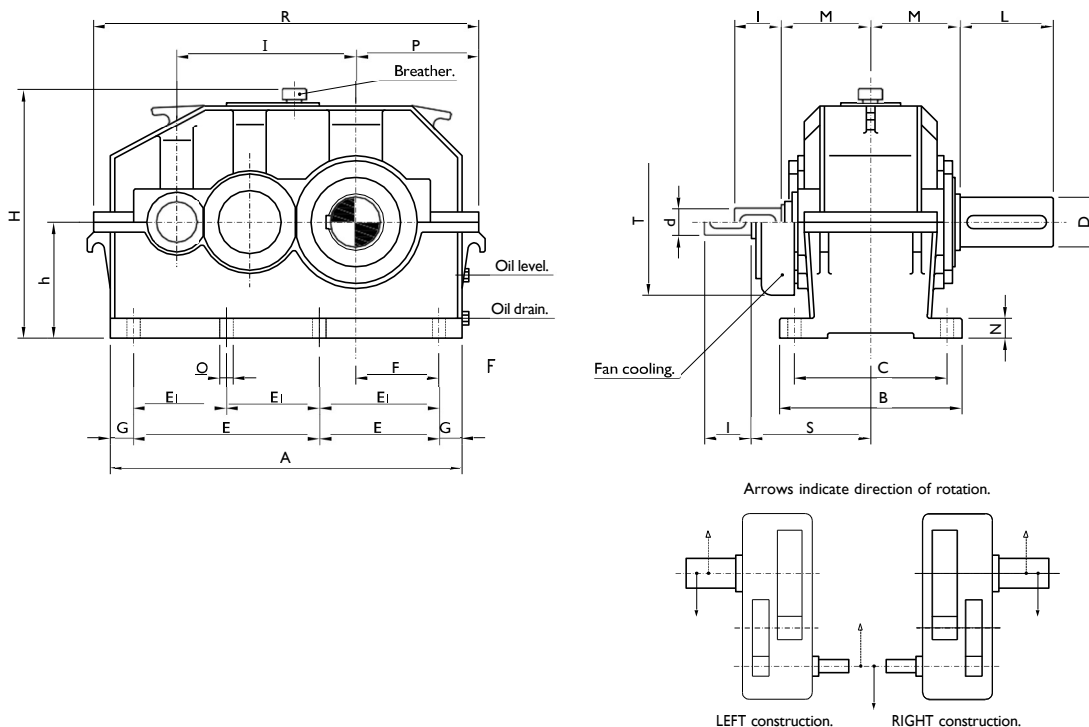
H-BGB Series POWER RATINGS TYPE HK2

NOM.RATIO	NOM. SPEEDS 1/MIN.		SIZE OF GEAR UNIT																		
	iN	n ₁ N	112	125	140	160	180	200	225	250	280	320	360	400	450	500	560	630	710	800	
GEAR BOX RATING P _{IN} – KW																					
6.3	1500	240	37	50	70	104	143	203	282	400	525	785	1150	1430	2000	3720	5050	7000	7100	–	–
	1000	160	25	34	47	70	98	143	213	275	395	555	820	1090	1510	2630	3640	4760	5400	7650	–
	750	120	19	25	36	53	73	108	170	227	305	420	620	890	1190	1970	2780	3850	5400	7650	–
7.1	1500	210	36	49	68	102	139	194	276	380	485	725	1050	1330	1890	3380	4750	6180	6250	–	–
	1000	140	24	33	45	68	92	133	198	252	360	485	745	990	1390	2330	3260	4200	6250	–	–
	750	105	18	25	34	51	70	100	148	208	270	368	565	780	1040	1755	2460	3160	4710	6650	–
8	1500	188	33	45	64	92	132	185	268	348	450	670	955	1280	1790	3080	4350	5550	5680	–	–
	1000	125	22	30	43	61	87	125	178	240	330	460	680	930	1290	2080	2950	3800	5680	–	–
	750	94	16	22	22	46	67	92	132	188	240	335	515	705	940	1580	2210	2900	4260	6020	–
9	1500	167	30	41	58	85	130	175	238	318	415	620	870	1150	1600	2750	3850	5050	5060	–	–
	1000	111	20	27	40	56.5	84	115	162	215	300	430	620	830	1130	1860	2620	3385	5060	–	–
	750	83	15	20.5	29	43	64	85	123	170	230	308	470	645	890	1450	2040	2740	4010	5730	–
10	1500	150	27	37	51	75	102	152	212	285	385	560	790	1070	1500	2500	3560	4550	4550	–	–
	1000	100	18	25	35	50	69	98	143	193	265	380	565	755	990	1860	2350	3100	4550	–	–
	750	75	13	18	25.5	38	51	78	108	154	207	280	430	600	810	1300	1850	2450	3590	5130	–
11.2	1500	134	23	34	46	68	95	138	186	252	350	510	720	950	1300	2285	3190	4100	4300	–	–
	1000	89	16	23	30.5	45.5	64	92	130	173	248	350	515	675	935	1520	2120	2800	4300	–	–
	750	67	11	16.5	23	35	49	72	96	130	187	255	390	508	715	1170	1650	2170	3210	4580	–
12.5	1500	120	21	30	40	58	82	110	165	226	320	440	650	880	1200	2020	2860	3700	5410	–	–
	1000	80	14	20	28	39	52	75	112	160	218	300	450	600	845	1370	1960	2570	3790	–	–
	750	60	11	15	20	29	42	58	86	123	165	228	335	450	640	1050	1490	1910	2850	4060	–
14	1500	107	18	26	36	49	72	102	148	204	282	380	570	740	1000	1780	2520	3300	4810	–	–
	1000	71	12	18	24	32	47	68	103	140	192	260	400	530	720	1235	1750	2300	3390	–	–
	750	53	9	13	18	24	36	52	76	108	147	202	295	410	560	930	1340	1700	2540	3600	–
16	1500	94	16	22	30.5	44	62	92	133	182	248	335	505	625	870	1570	2240	2900	4300	–	–
	1000	62	11	15	21	30	40	62	90	130	172	235	350	470	650	1100	1550	2050	3000	–	–
	750	47	8	12	15	21	31	47	68	98	128	180	270	367	505	820	1185	1510	2240	3200	–
18	1500	83	14	19	27	39	55	78	117	150	215	290	450	540	760	1450	1920	2600	4010	–	–
	1000	56	9	14	19	26	39	55	80	100	150	210	320	415	560	1000	1350	1820	2740	–	–
	750	41	7	10	13.5	19	29	40	60	85	112	160	250	338	445	750	970	1420	2145	3090	–
20	1500	75	12	16.5	24	36	49	73	107	142	208	250	415	518	695	1320	1850	2340	3590	–	–
	1000	50	7.5	13	17	24	31	50	72	95	135	188	285	370	500	880	1230	1650	2390	–	–
	750	38	6	8.5	12	18	25	37	56	80	103	142	230	308	400	690	820	1285	1910	2760	–
22.4	1500	67			21	30	40	64	96	128	185	220	385	488	650	1175	1550	2040	3100	–	–
	1000	45			15	20	26	45	65	90	122	167	260	340	455	790	1060	1350	2090	–	–
	750	33			11	16	20	33	50	70	92	127	205	280	360	615	760	1035	1590	2350	–

NOM.RATIO	INPUT SPEEDS 1/MIN.		SIZE OF GEAR UNIT																		
	iN	n ₁ N	112	125	140	160	180	200	225	250	280	320	360	400	450	500	560	630	710	800	
THERMAL CAPACITY P _{th} – KW – WITHOUT COOLING																					
6.3	1500	31.5	42	50	65	84	105	128	163	215	255	312	406	499	651	808	1035	1240	1545	–	–
	÷	1000	27	37	48	58	76	97	126	157.5	200	250	302	396	488	641	797	1015	1222	1518	–
14	750	24	34	42	55.5	70	94.5	115	149	189	240	297	385	483	630	787	983	1201	1497	–	–
16	1500	26	36	44	59	76.5	99	126	154	194	250	302	396	483	630	787	1004	1211	1518	–	–
	÷	1000	23	30.5	38	50	64	88	113	139	184	240	292	375	478	580	766	988	1190	1497	–
22.4	750	21	26	35	44	59	79	105	128	170	220	286	359	457	569	755	973	1170	1466	–	–
THERMAL CAPACITY P _{th} – KW – WITH FAN COOLING																					
6.3	1500	54.5	68	86	115.5	142	170	213	271	333	420	517	672	827	1035	1342	1645	–	–	–	–
	÷	1000	42	52.5	68	89	110	152	189	229	292	385	467	601	755	952	1240	1545	–	–	–
14	750	33.5	44	61	79	105	136	178.5	218	271	354	436	548	704	911	1192	1445	–	–	–	–
16	1500	47	61	79	100	126	163	208	260	302	406	509	651	808	983	1240	1545	–	–	–	–
	÷	1000	36	46	58	73.5	100	126	168	218	281	364	457	590	724	931	1138	1445	–	–	–
22.4	750	31.5	40	52.5	65	89	110	147	189	250	312	415	538	672	879	1035	1342	–	–	–	–
THERMAL CAPACITY P _{th} – KW – WITH COOLING COIL																					
6.3	1500	155	173	195	210	234	258	278	307	360	406	467	559	704	858	911	1138	–	–	–	–
	÷	1000	143	164	190	203	227	246	271	301	354	396	457	538	683	827	900	1119	–	–	–
22.4	750	127	147	170	195	217	239	260	294	343	385	441	527	667	808	890	1087	–	–	–	–
THERMAL CAPACITY P _{th} – KW – WITH FAN AND COOLING COIL																					
6.3	1500	178	200	231	260	292	322	365	415	478	570	672	827	1035	1240	1445	1745	–	–	–	–
	÷	1000	157	179	210	234	260	302	333	375	446	527	620	745	952	1138	1342	1645	–	–	–
22.4	750	136	157.5	189	220	250	281	322	364	425	500	580	693	890	1087	1292	1545	–	–	–	–



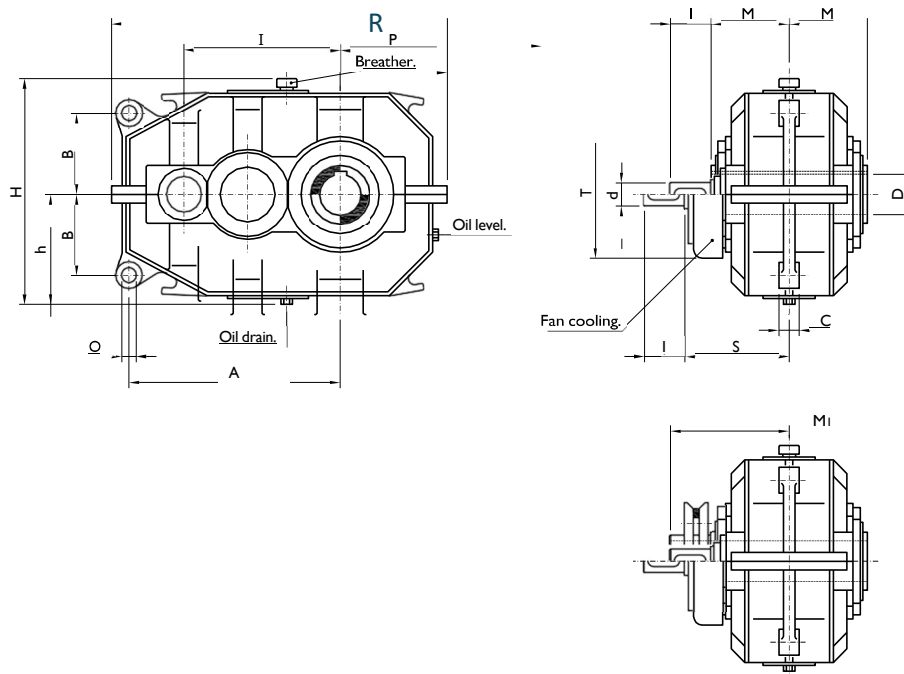
H-BGB Series 2 STAGES DIMENSIONAL SHEET TYPE HK2



TYPE	INPUT SHAFT										OUTPUT SHAFT										FAN		MEAN WEIGHT (kg)	OIL CAP. (litres)			
	IN = 6,3 + 11,2					IN = 12,5 + 20					IN > 20																
HK2	A	B	C	d	I	d	I	d	I	D	L	E	E ₁	F	G	h	H	I	M	N	O	P	R	S	T		
112	380	220	190	22	50	19	40			48	100	160		90	30	125	280	192	110	20	14	140	420	170	170	60	3
125	420	240	210	28	60	24	50			55	110	180		105	30	140	310	215	120	20	14	155	460	190	210	80	4,5
140	470	260	230	32	60	28	60	24	50	60	120	200		115	35	160	350	240	130	25	14	175	520	200	210	110	6
160	540	290	250	42	80	32	60	24	50	70	140	225		120	45	180	380	272	145	30	18	190	590	220	280	140	8
180	600	320	280	48	100	38	80	28	60	80	170	250		135	50	200	440	305	160	30	18	215	660	230	280	190	12
200	660	350	300	50	100	42	80	32	60	90	170	280		155	50	225	480	340	175	38	22	240	730	265	350	270	16
225	750	380	330	55	110	48	100	38	80	100	210	310		165	65	250	545	385	190	38	22	265	820	280	350	360	22
250	820	430	370	60	120	50	100	40	80	110	210	345		185	65	280	590	430	215	50	27	290	900	310	350	500	31
280	920	480	420	65	120	55	110	45	100	120	210	380		205	80	315	660	480	240	50	27	325	1000	330	420	680	45
320	1030	540	470	75	140	60	120	50	100	140	250	425		225	90	355	740	545	270	60	33	360	1120	370	420	950	63
360	1150	580	510	85	170	70	140	55	110	160	300	475		250	100	400	825	610	290	60	33	400	1250	400	600	1250	95
400	1280	640	570	95	170	85	170	65	120	170	300	525		275	115	450	920	680	320	70	33	440	1380	430	600	1740	140
450	1440	740	650	105	210	95	170	75	140	190	350		400	320	120	500	1020	770	360	70	39	490	1540	470	600	2400	185
500	1600	820	720	115	210	100	210	85	170	220	350		440	340	140	560	1140	860	400	80	39	550	1740	500	750	3300	250
560	1780	900	790	125	210	110	210	95	170	250	410		500	395	140	630	1280	960	440	80	45	610	1930	550	750	4500	370
630	2000	1000	880	150	250	125	210	110	210	300	500		560	440	160	710	1420	1080	490	110	45	675	2150	590	750	6200	450
710	2230	1140	1020	160	300	140	250	120	210	340	550		630	510	170	800	1600	1210	560	110	45	760	2390	660	750	8500	560
800	2500	1300	1170	180	300	160	300	130	210	400	650		710	595	180	185	1800	1360	640	110	52	860	2660	740	750	11800	700



H-BGB Series 2 STAGES DIMENSIONAL SHEET TYPE HK2 HOLLOW SHAFT WITH TORQUE ARM



TYPE	INPUT SHAFT									FAN										MEAN WEIGHT (kg)	OIL CAP. (litres)	
				$i_1 = 6,3 + 11,2$			$i_2 = 12,5 + 20$			$i_3 > 20$												
HK2 H	A	B	C	d	l	d	l	d	l	D_{H7}	h	H	I	M	M_1	O_{R8}	P	R	S	T		
112	260	93	24	22	50	19	40			55	130	270	192	110		18	140	420	170	170	52	1,5
125	290	110	24	28	60	24	50			60	145	300	215	120		18	155	460	190	210	70	3
140	320	120	28	32	60	28	60	24	50	70	170	355	240	130		20	175	520	200	210	95	4
160	370	135	32	42	80	32	60	24	50	80	195	400	272	145	218	22	190	590	220	280	120	5
180	415	155	35	48	100	38	80	28	60	90	220	450	305	160	240	25	215	660	230	280	165	7,5
200	460	165	45	50	100	42	80	32	60	100	245	500	340	175	260	30	240	730	265	350	235	10
225	520	185	50	55	110	48	100	38	80	110	270	560	385	190	280	35	265	820	280	350	315	13
250	580	210	55	60	120	50	100	40	80	120	300	620	430	215	315	40	290	900	310	350	430	18
280	650	225	60	65	120	55	110	45	100	140	340	700	480	240	355	45	325	1000	330	420	590	25
320	725	260	70	75	140	60	120	50	100	160	370	750	545	270	410	50	360	1120	370	420	830	36
360	800	300	80	85	170	70	140	55	110	180	405	825	610	290	430	55	400	1250	400	600	1100	54
400	910	330	90	95	170	85	170	65	120	200	455	920	680	320	475	60	440	1380	430	600	1500	73
450	1020	370	105	105	210	95	170	75	140	230	510	1040	770	360	540	65	490	1540	470	600	2100	105
500	1130	420	105	115	210	100	210	85	170	260	560	1140	860	400	610	70	550	1740	500	750	2900	140
560	1250	470	110	125	210	110	210	95	170	300	630	1270	960	440	650	75	610	1930	550	750	3900	210
630	1400	530	115	150	250	125	210	110	210	340	700	1430	1080	490	730	80	675	2150	590	750	5400	250
710	1550	600	120	160	300	140	250	120	210	380	800	1630	1210	560	800	90	760	2390	660	750	7500	350
800	1730	670	125	180	300	160	300	130	210	420	900	1840	1360	640	920	100	860	2660	740	750	10500	420

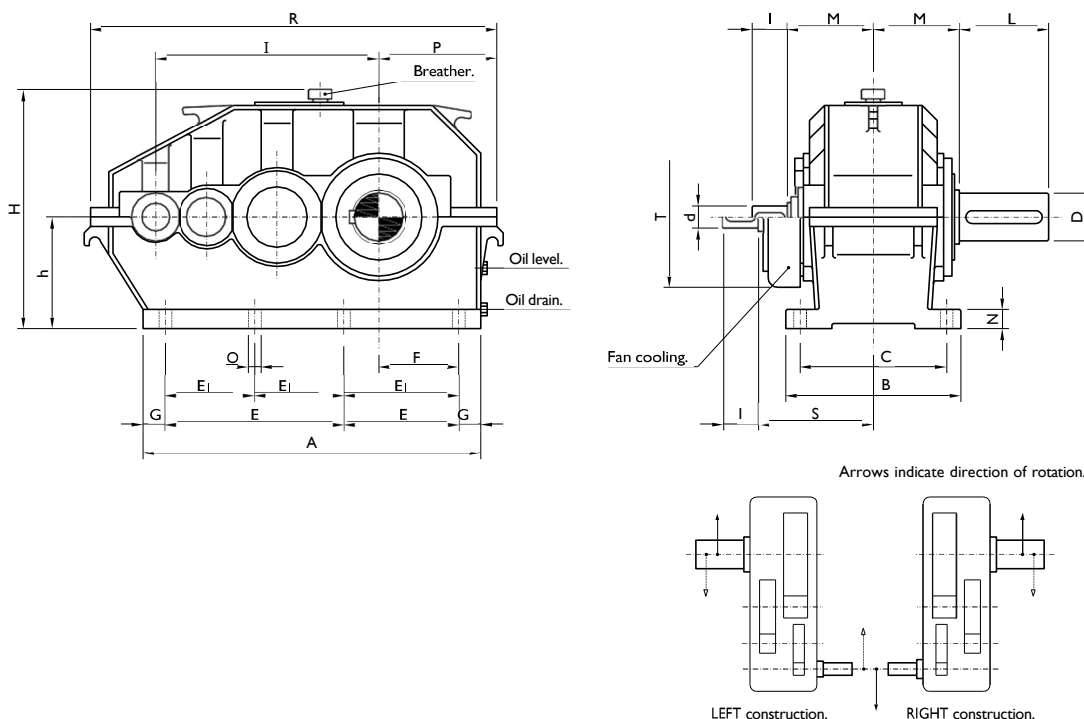


H-BGB Series POWER RATINGS TYPE HK3

NOM.RATIO	NOM. SPEEDS 1/MIN.		SIZE OF GEAR UNIT																					
	IN	n ₁ N	n ₂ N	125	140	160	180	200	225	250	280	320	360	400	450	500	560	630	710	800				
GEAR BOX RATING P _{1N} - KW																								
14	1500	107	24	34	48	68	103	137	197	275	375	572	1	650	1	920	1	1800	1	2520	1	3250	1	4860
	1000	71	17.5	24	33	45	71	93	132	187	265	400	490	690	1240	1	1750	1	2320	1	3400	1	4880	
	750	53	13	18	25	35	54	72	102	147	210	315	380	570	930	1310	1740	2560	3680					
16	1500	94	21.5	30	44	63	93	128	177	255	345	517	690	1	850	1	1600	1	2240	1	2890	1	4310	
	1000	62	15.5	21.5	31	42	64	86	118	167	245	357	450	630	1110	1	1560	1	2070	1	3040	1	4370	
	750	47	11.5	16	23	32	49	66	93	132	195	285	350	520	820	1160	1540	2260	3250					
18	1500	83	19.5	27	40.5	61	84	118	159	230	318	465	545	1	790	1	1430	1	2010	1	2770	1	4060	
	1000	56	14	19.5	29	40	60	80	105	149	217	320	415	585	1000	1390	1	1850	1	2720	1	3880		
	750	41	10.3	14.5	21	31	44.5	60.5	84	119	167	260	320	475	750	1090	1440	2150	3120					
20	1500	75	17.5	24	37	59	73	104	143	204	292	420	495	1	730	1	1300	1	1800	1	2440	1	3580	
	1000	50	12.5	17.5	27	37	54	71	95	138	198	295	380	535	890	1	1240	1	1650	1	2400	1	3420	
	750	38	9	13	19.5	27.5	40.5	55	76	107	159	242	300	435	670	970	1270	1	1900	1	2750			
22,4	1500	67	15.7	21.5	34	51	66	92	129	180	267	380	475	1	680	1	1180	1	1600	1	2150	1	3170	
	1000	45	11	15.5	24	35	49	66	85	128	187	267	350	490	800	1100	1	1450	1	2150	1	3020		
	750	33	8	11.5	18	25	37	50	68	96	138	217	280	400	600	860	1120	1680	2450					
25	1500	60	14	19.5	30	46	60	81	115	160	232	345	445	1	630	1	1050	1	1420	1	1910	1	2800	
	1000	40	10	14	20.5	31	42	58	78	110	163	240	320	450	715	990	1	1320	1	1930	1	2880		
	750	30	7	10.3	16	23	30	45	60	85	122	195	240	360	530	765	990	1490	2160					
28	1500	54	12.5	17.5	26	42	55	72	103	142	212	315	415	580	1	930	1	1260	1	1680	1	2450		
	1000	36	9	12.5	18.5	28	38	53	70	100	147	215	285	410	640	890	1180	1	1730	1	2530			
	750	27	6.3	9	14	21	27	40	54	76	113	175	215	320	470	680	875	1320	1900					
31,5	1500	48	11	15.5	23	37	49	68	93	126	197	285	385	540	1	825	1	1120	1	1520	1	2240		
	1000	32	8	11	16.5	25	33	47	61	90	128	195	260	370	570	795	1050	1	1550	1	2290			
	750	24	5.5	8	12.5	19	25	36	49	68	98	157	190	290	420	600	790	1170	1720					
35,5	1500	42	10	14	21	33	45	61	83	116	177	260	350	500	1	735	1	1070	1	1400	1	2100	1	3050
	1000	28	7	10	14.5	22	30	40	55	81	118	175	240	340	510	710	940	1	1390	1	2050			
	750	21	5	7	11	17	22.5	32	44	61	90	140	170	260	370	540	700	1040	1510					
40	1500	38	9	12.5	19.5	30	41	55	75	107	159	235	315	450	655	1	970	1	1290	1	1900	1	2750	
	1000	25	6.3	9	13	20	27	36	50	72	103	158	215	310	455	635	840	1250	1	1850				
	750	19	4.5	6.3	10	15	21	29	39	55	80	125	152	230	330	490	620	950	1370					
45	1500	33,5			17	25	36	50	67	98	144	215	280	400	590	1	880	1	1140	1	1700	1	2500	
	1000	22			11.5	18	24.5	32	45	65	93	143	190	280	410	565	750	1120	1	1650				
	750	16,6			9	13.5	18.5	26	35	50	72	110	135	205	300	440	585	840	1250					
50	1500	30			15	22	32	45	60	88	130	195	250	360	525	780	1	1020	1	1520	1	2220		
	1000	20			11	16	22	28.5	41	60	85	130	170	250	365	505	670	1000	1500					
	750	15			8	12	16	23.5	31	45	65	98	120	185	270	400	520	750	1130					
56	1500	27			14	19	28	40	54	79	115	175	220	320	470	690	910	1	1360	1	1980			
	1000	18			9.5	14	19.5	25	36.5	54	75	117	150	220	325	450	600	900	1350					
	750	13,4			7	11	15	21	17.5	40	58	88	107	165	235	360	470	665	990					
63	1500	24			11	16.5	25	35	44	63	102	150	195	290	420	615	810	1	1220	1	1760			
	1000	16			8	12.5	17	22	31	41	70	105	135	190	290	400	540	805	1170					
	750	12			6	9.5	11.5	18	24	35	51	78	95	148	210	325	420	590	900					
71	1500	21			10	14.5	21	31	39	56	90	135	175	250	370	550	725	1090	1	1570				
	1000	14			7	11	15	19.5	29	36	60	92	120	165	260	360	480	720	1040					
	750	10,5			5.5	8.5	10.5	16	21	32	45	70	84	130	190	290	380	525	790					
80	1500	18,8			9	13	19	27	35	51	80	120	155	230	330	490	645	960	1	1400				
	1000	12,5			6	9.5	13	17.5	26	33	53	80	105	145	230	320	430	645	930					
	750	9,4			4.7	7.5	9.5	14.5	18.5	29	40	63	75	115	170	260	340	465	690					
90	1500	16,7			8	11	17	25	31	45	72	108	139	205	295	435	575	870	1250					
	1000	11,1			5	9.5	11.5	15.5	23	30	48	70	95	130	205	285	385	570	820					
	750	8,3			4	8	9	13	16.5	26	35	56	67	100	150	230	300	415	610					
100	1500	15			7	9.5	15.5	22	28	41	60	97	125	170	265	390	515	780	1115					
	1000	10			4	6	10	14	20	27	40	61	85	115	185	255	345	510	735					
	750	7,5			3.5	5.5	8.5	11.5	15	23	30	50	60	87	135	205	270	370	540					
112	1500	13,4				14	19	25	37.5	52	87	112	160	235	350	460	690	990						
	1000	8,9				9	12.5	19	25	35	53	75	100	165	230	310	455	660						
	750	6,7				8	10.5	13.5	20	26	45	54	75	120	185	240	330	480						
THERMAL CAPACITY P _{th} - KW - WITHOUT COOLING																								
14	1500	27	35	44	56	68	94	113	138	181	220	276	348	420	528	672	819	1045						
	1000	26	33	41	51	63	84	103	131	176	210	270	343	415	510	651	787	1026						
	750	20	26	35	47	57	80	94	124	159	204	252	324	404	504	641	777	1004						
35.5	1500	21	28	38	51	63	84	102	128	173	210	266	343	412	515	651	798	1026						
	1000	18	25	34	47	58	74	92	118	163	202	253	322	391	494	625	766	994						
	750	17	24	32	42	53	68	84	105	142	180	231	307	381	486	617	745	973						
THERMAL CAPACITY P _{th} - KW - WITH FAN COOLING																								
14	1500	55	66	79	94	115	147	178	229	281	354	436	538	662	827	1087								
	1000	41	53	68	87	105	136	168	213	260	333	397	512	611	777	1037								
	750	39	50	64	82	100	131	159	206	250	317	377	489	580	734	994								
35.5	1500	52	63	76	92	111	147	170	213	270	337	403	517	611	782	1035								
	1000	41	52	66	84	100	134	160	203	255	317	375	484	572	724	975								
	750	36	47	61	79	94	126	147	189	202	242	356	462	540	695	931								
THERMAL CAPACITY P _{th} - KW - WITH COOLING COIL																								
14	1500	80	96	105	126	147	178	208	260	299	375	446	564	662	777	879								
	1000	70	84	101	121	139	168	204	255	290	362	441	554	636	745									



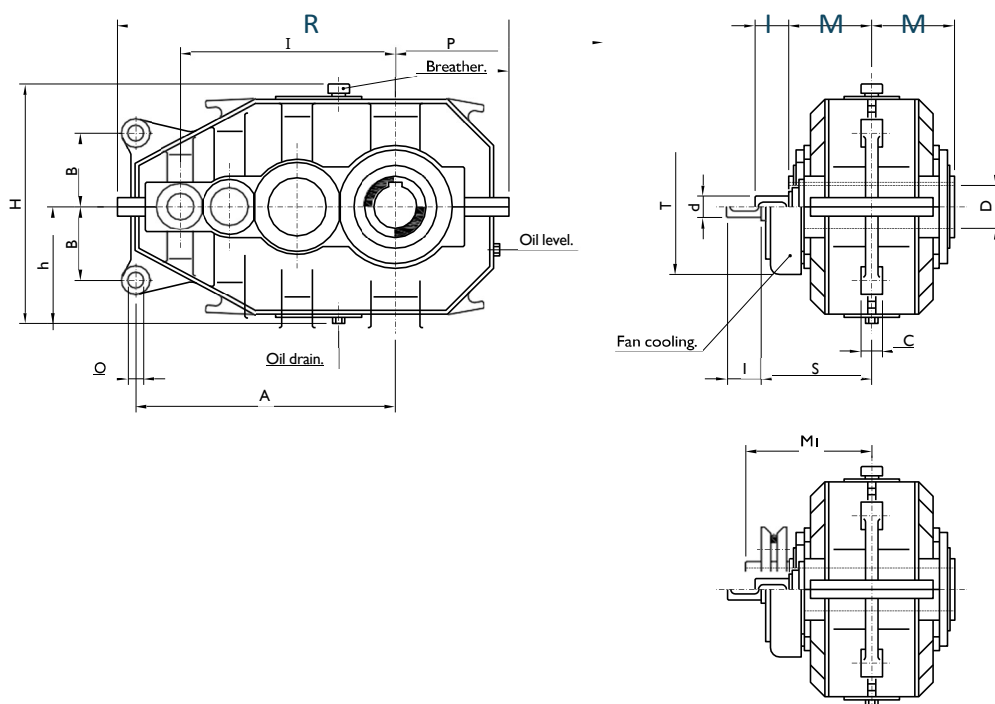
H-BGB Series 3 STAGES DIMENSIONAL SHEET TYPE HK3



TYPE HK3	INPUT SHAFT										OUTPUT SHAFT		FAN										MEAN WEIGHT (kg)	OIL CAP. (litres)						
	$i_n = 14 + 40$			$i_n = 45 + 100$			$i_n > 100$				D	L	E	E_1	F	G	h	H	I	M	N	O			P	R	S	T		
Size	A	B	C	d	l	d	l	d	l	d	l	D	L	E	E_1	F	G	h	H	I	M	N	O	P	R	S	T			
125	420	240	210	16	30							55	110	180		105	30	140	310	278	120	20	14	155	530	190	210	85		5
140	470	260	230	16	30							60	120	200		115	35	160	350	310	130	25	14	175	590	200	210	120		7
160	540	290	250	22	50	19	40					70	140	225		120	45	180	380	352	145	30	18	190	650	220	280	160		10
180	600	320	280	28	60	24	50					80	170	250		135	50	200	440	395	160	30	18	215	720	230	280	210		15
200	660	350	300	32	60	28	60	24	50			90	170	280		155	50	225	480	440	175	38	22	240	810	265	350	290		20
225	750	380	330	42	80	32	60	24	50			100	210	310		165	65	250	545	497	190	38	22	265	900	280	350	400		25
250	820	430	370	48	100	38	80	28	60			110	210	345		185	65	280	590	555	215	50	27	290	1005	310	350	540		35
280	920	480	420	50	100	42	80	32	60			120	210	380		205	80	315	660	620	240	50	27	325	1105	330	420	750		52
320	1030	540	470	55	110	48	100	38	80			140	250	425		225	90	355	740	705	270	60	33	360	1255	370	420	1000		75
360	1150	580	510	60	120	50	100	40	80			160	300	475		250	100	400	825	790	290	60	33	400	1380	400	600	1350		110
400	1280	640	570	65	120	55	110	45	100			170	300	525		275	115	450	920	880	320	70	33	440	1535	430	600	1850		150
450	1440	740	650	75	140	60	120	50	100			190	350		400	320	120	500	1020	995	360	70	39	490	1725	470	600	2500		210
500	1600	820	720	85	170	70	140	55	110			220	350		440	340	140	560	1140	1110	400	80	39	550	1940	500	750	3600		290
560	1780	900	790	95	170	85	170	65	120			250	410		500	395	140	630	1280	1240	440	80	45	610	2175	550	750	4850		430
630	2000	1000	880	105	210	95	170	75	140			300	500		560	440	160	710	1420	1400	490	110	45	675	2420	590	750	6600		510
710	2230	1140	1020	115	210	100	210	85	170			340	550		630	510	170	800	1600	1570	560	110	45	760	2730	660	750	9000		800
800	2500	1300	1170	125	210	110	210	95	170			400	650		710	595	185	900	1800	1760	640	110	52	860	3060	740	750	13000		1000



H-BGB Series 3 STAGES DIMENSIONAL SHEET TYPE HK3 HOLLOW SHAFT WITH TORQUE ARM



TYPE	INPUT SHAFT										FAN								MEAN WEIGHT (kg)	OIL CAP. (litres)		
	$i_N = 14 \div 40$		$i_N = 45 \div 100$		$i_N > 100$																	
HK3 H	A	B	C	d	l	d	l	d	l	D_{107}	h	H	I	M	M_1	O_{18}	P	R	S	T		
125	350	110	24	16	30					60	145	300	278	120		18	155	530	190	210	75	3
140	385	120	28	16	30					70	170	355	310	130		20	175	590	200	210	105	4,5
160	425	135	32	22	50	19	40			80	195	400	352	145	218	22	190	650	220	280	140	6
180	470	155	35	28	60	24	50			90	220	450	395	160	240	25	215	720	230	280	185	9
200	530	165	45	32	60	28	60	24	50	100	245	500	440	175	260	30	240	810	265	350	250	11
225	600	185	50	42	80	32	60	24	50	110	270	560	497	190	280	35	265	900	280	350	340	14
250	670	210	55	48	100	38	80	28	60	120	300	620	555	215	315	40	290	1005	310	350	450	19
280	740	225	60	50	100	42	80	32	60	140	340	700	620	240	355	45	325	1105	330	420	630	28
320	840	260	70	56	110	48	100	38	80	160	370	750	705	270	410	50	360	1255	370	420	880	40
360	920	300	80	60	120	50	100	40	80	180	405	825	790	290	430	55	400	1380	400	600	1150	60
400	1050	330	90	65	120	55	110	45	100	200	455	920	880	320	475	60	440	1535	430	600	1600	80
450	1180	370	105	75	140	60	120	50	100	230	510	1040	995	360	540	65	490	1725	470	600	2150	115
500	1300	420	105	85	170	70	140	55	110	260	560	1140	1110	400	610	70	550	1940	500	750	3100	160
560	1460	470	110	95	170	85	170	65	120	300	630	1270	1240	440	650	75	610	2175	550	750	4100	240
630	1650	530	115	105	210	95	170	75	140	340	700	1430	1400	490	730	80	675	2420	590	750	5700	280
710	1850	600	120	115	210	100	210	85	170	380	800	1630	1570	560	800	90	760	2730	660	750	7800	450
800	2060	670	125	125	210	110	210	95	170	420	900	1840	1760	640	920	100	860	3060	740	750	11000	560

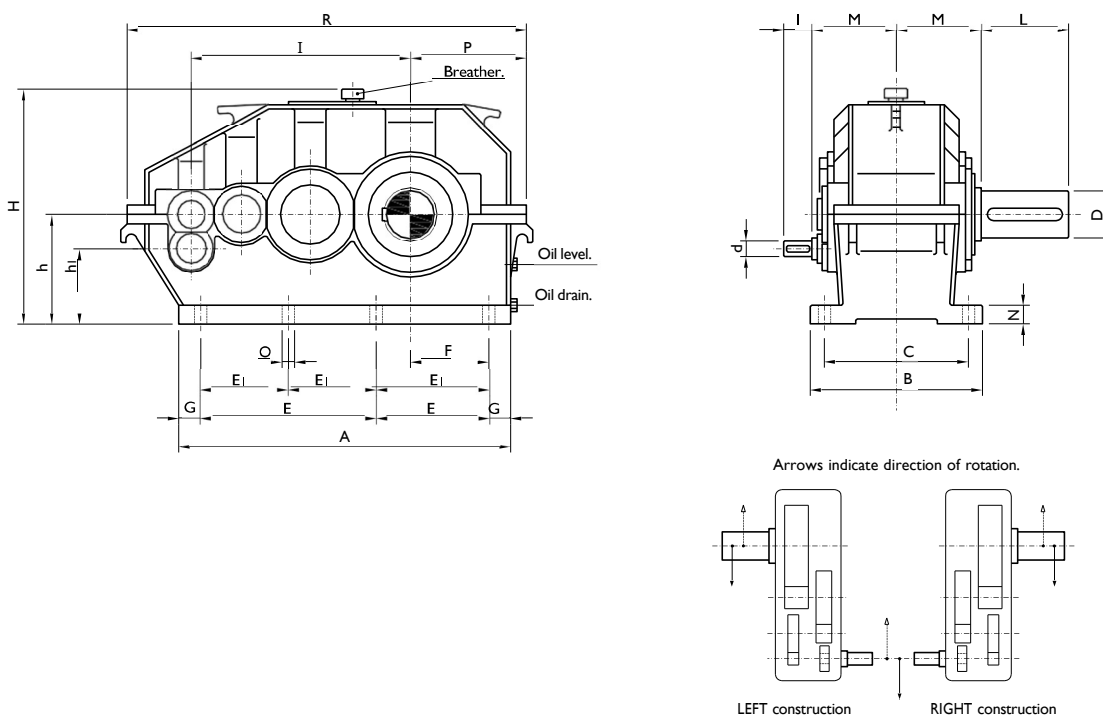


H-BGB Series POWER RATINGS TYPE HK4

NOM.RATIO	NOM. SPEEDS 1/MIN.		SIZE OF GEAR UNIT																		
	iN	n ₁ N	180	200	225	250	280	320	360	400	450	500	560	630	710	800					
GEAR BOX RATING P _{1N} - KW																					
112	1500	13,4	9	14	19	28	39	58	90	108	158	252	357	476	680	985					
	1000	9	6	9	13	16	19	38	59	69	103	168	237	317	466	665					
	750	6,7	4,5	7	9,5	14	19	28	43	52	82	128	183	232	350	490					
125	1500	12	9	12,5	17	25	35	52	80	97	142	226	320	425	610	880					
	1000	8	6	8	11,5	17	23	34	53	62	92,5	151	207	282	416	570					
	750	6	4,5	6,2	8,5	12,5	17	25	40	47	73	115	162	207	310	440					
140	1500	10,7	8,1	11	15	22	31	46	71	87	127	204	288	380	550	790					
	1000	7,1	5,5	7,2	10	15,3	21	30	47	56	83	135	191	250	370	510					
	750	5,3	4,1	5,6	7,5	11	15	22	35	42	65	103	145	187	280	395					
160	1500	9,4	7,3	9,9	13,5	20	28	41	62	78	114	183	258	340	495	710					
	1000	6,2	4,9	6,4	9	13,5	19	27	42	50	75	120	170	225	330	460					
	750	4,7	3,7	5	6,7	10	13,5	20	31	38	58	92	130	168	250	355					
180	1500	8,3	6,5	8,4	12	18	25	37	56	70	102	160	230	300	440	630					
	1000	5,5	4,4	5,7	8	12	17	24	38	45	67	108	153	200	295	410					
	750	4,2	3,3	4,5	6	9	12	18	28	34	52	82	117	150	224	320					
200	1500	7,5	5,8	7,2	11	16	22	33	50	62	92	147	205	270	395	565					
	1000	5	3,8	5,1	7	10,5	15	21,5	34	40	60	97	137	180	265	370					
	750	3,75	3	4	5,5	8	10,5	16	25	30	46	73	105	135	200	285					
224	1500	6,7	4,7	6,5	10	14,5	20	30	45	55,5	82	130	185	240	355	515					
	1000	4,5	3,1	4,5	6,3	9,5	13,5	19	30	36	54	87	123	160	240	330					
	750	3,3	2,4	3,6	5	7	9,5	14,5	22	27	41	65	94	120	180	255					
250	1500	6	4,2	5,9	9	13	18	27	40	50	73	115	165	215	320	460					
	1000	4	2,8	4	5,6	8,5	12	17	27	32	48	78	110	145	215	295					
	750	3	2,1	3,2	4,5	6,2	8,5	13	20	24	37	58	84	108	160	230					
280	1500	5,3	3,7	5,3	8	11,5	16	24	35	45	65	102	148	193	280	400					
	1000	3,6	2,5	3,6	5	7,5	10,5	15	24	29	43	70	98	130	190	265					
	750	2,7	1,9	2,9	4	5,5	7,5	11,5	18	21,5	33	52	74	97	144	200					
315	1500	4,8	3,3	4,7	7	10	13	21	31	40	58	92	130	173	255	360					
	1000	3,2	2,2	3,2	4,5	6,5	9,5	13,5	21	26	38	63	88	117	170	238					
	750	2,4	1,7	2,6	3,6	5	6,5	10,5	16	19	29,5	47	67	87	130	180					
355	1500	4,2	2,9	4,2	6,3	9	11,5	18	28	36	52	83	117	155	230	320					
	1000	2,8	2	2,9	4	5,8	8,5	12	19	23,5	34	56	79	105	150	214					
	750	2,1	1,5	2,3	3,2	4,5	6	9,5	14	17	26,5	42	60	78	115	162					
400	1500	3,75	2,6	3,6	5,7	8	10,5	16	25	32	47	74	105	140	200	280					
	1000	2,5	1,8	2,6	3,6	5,2	7,5	11	17	21	30	50	71	94	135	190					
	750	1,9	1,3	2	2,9	4	5,5	8,5	13	15	23,5	37	54	70	103	145					
450	1500	3,3	2,3	3,2	5	7	9,5	14	21	29	38	66	95	125	180	250					
	1000	2,2	1,6	2,3	3,2	4,6	6,6	10	14	19	27	45	63	84	120	170					
	750	1,7	1,2	1,8	2,6	3,5	5	7,5	11	13,5	19	33	48	63	92	130					
500	1500	3	2	2,9	4,5	6	8,5	12,5	19	26	34	59	85	110	160	224					
	1000	2	1,4	2	2,9	4	6	9	13	17	24	40	55	75	108	153					
	750	1,6	1,1	1,6	2,3	3	4,5	6,5	9	12	17	29	43	56,5	80	115					
560	1500	2,7				5,5	7,5	11	17	23	30	53	75	98	145	200					
	1000	1,8				3,5	5,4	8	12	15	21,5	36	50	67	97	137					
	750	1,3				2,6	4	5,5	7,5	11	15	26	38	51	72	100					
630	1500	2,4				5	6,5	10	15,5	21	27	47	67	88	130	180					
	1000	1,6				3	4,8	7	11	13,5	19	32	45	60	87	123					
	750	1,2				2,3	3,5	5	6	10	13,5	23	34	45	65	90					
NOM.RATIO	INPUT SPEEDS 1/MIN.		SIZE OF GEAR UNIT																		
iN	n ₁ N	180	200	225	250	280	320	360	400	450	500	560	630	710	800						
THERMAL CAPACITY P _{th} - KW - WITHOUT COOLING																					
112	1500	24	31	40	52	69	94	110	142	178	218	287	375	446	569						
	÷	1000	21	27	36	47	58	83	100	126	157	208	266	355	426	548					
	630	750	18	24	32	42	55	77	94	115	147	189	234	302	401	510					



H-BGB Series 4 STAGES DIMENSIONAL SHEET TYPE HK4



TYPE				INPUT SHAFT				OUTPUT SHAFT														MEAN WEIGHT (kg)	OIL CAP. (litres)	
				$i_{12} < 500$		$i_{12} > 500$																		
HK4	A	B	C	d	I	d	I	D	L	E	E ₁	F	G	h	h ₁	H	I	M	N	O	P	R		
180	600	320	280	16	30			80	170	250		135	50	200	137	440	395	160	30	18	215	720	220	15
200	660	350	300	16	30			90	170	280		155	50	225	155	480	440	175	38	22	240	810	300	20
225	750	380	330	19	40			100	210	310		165	65	250	170	545	497	190	38	22	265	900	400	25
250	820	430	370	24	50	19	40	110	210	345		185	65	280	190	590	555	215	50	27	290	1005	540	35
280	920	480	420	28	60	24	50	120	210	380		205	80	315	215	660	620	240	50	27	325	1105	750	52
320	1030	540	470	32	60	24	50	140	250	425		225	90	355	243	740	705	270	60	33	360	1255	1000	75
360	1150	580	510	38	80	28	60	160	300	475		250	100	400	275	825	790	290	60	33	400	1380	1350	110
400	1280	640	570	42	80	32	60	170	300	525		275	115	450	310	920	880	320	70	33	440	1535	1850	150
450	1440	740	650	48	100	38	80	190	350		400	320	120	500	340	1020	995	360	70	39	490	1725	2500	210
500	1600	820	720	50	100	40	80	220	350		440	340	140	560	380	1140	1110	400	80	39	550	1940	3600	290
560	1780	900	790	55	110	45	100	250	410		500	395	140	630	430	1280	1240	440	80	45	610	2175	4850	430
630	2000	1000	880	60	120	50	100	300	500		560	440	160	710	485	1420	1400	490	110	45	675	2420	6600	510
710	2230	1140	1020	70	140	55	110	340	550		630	510	170	800	550	1600	1570	560	110	45	760	2730	9000	800
800	2500	1300	1170	85	170	65	120	400	650		710	595	185	900	620	1800	1760	640	110	52	860	3060	13000	1000

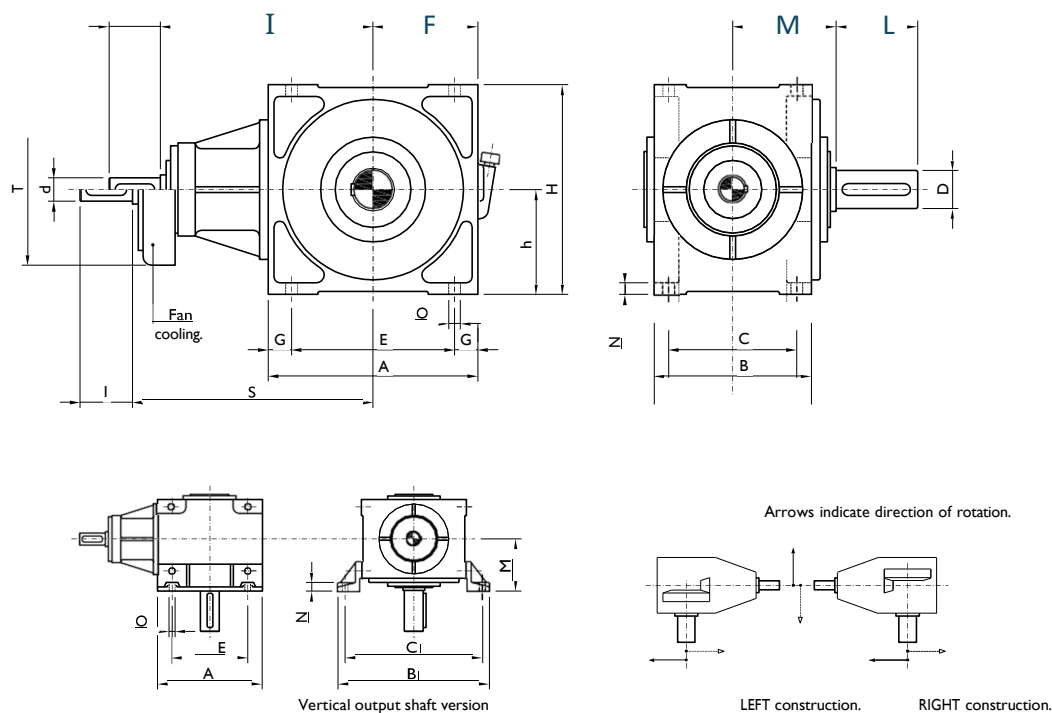


H-BGB Series POWER RATINGS TYPE BS1

NOM.RATIO	NOM. SPEEDS 1/MIN.		SIZE OF GEAR UNIT															
	iN	n ₁ N	80	90	100	110	125	140	160	180	200	225	250	280	320	360	400	
GEAR BOX RATING P _{IN} - KW																		
1.25	1500	1200			77	110	140	180	259	350	460	715	880	1380	1850			
	1000	800			49	75	105	135	170	230	360	480	670	1000	1380	1800		
	750	600			37	55	85	105	130	180	255	390	545	830	1100	1450		
1.4	1500	1070			68	98	125	160	230	310	410	640	795	1230	1650	2300		
	1000	715			45	67	94	120	152	205	320	430	600	890	1230	1570		
	750	535			34	49	76	94	116	160	213	350	485	740	985	1300		
1.6	1500	940	48	61	88	112	143	205	275	365	570	710	1100	1470	2000			
	1000	625	33	40	60	84	117	136	183	285	384	535	795	1100	1400	2000		
	750	470	23	30	44	68	84	103	143	235	310	435	660	880	1165	1500	2200	
1.8	1500	835	40	55	79	100	128	183	245	325	510	680	980	1315	1800			
	1000	555	26	36	53.5	75	104	121.5	163	254	343	500	710	985	1250	1800		
	750	415	20.5	27	39	54	75	92.5	128	210	280	390	600	785	1040	1340	1950	
2	1500	750	34	49	70	89	115	163	220	290	455	610	875	1175	1600	1800		
	1000	500	23	32	48	67	93	118.5	145	235	306	450	635	880	1120	1600	2150	
	750	375	18.5	24	35	48	67	82.5	114	187	250	350	535	700	930	1200	1750	
2.24	1500	670	30	44	63	79	103	145	196	258	405	550	780	1050	1430	1600		
	1000	445	20	29	43	60	83	106	130	210	273	435	565	785	1000	1430	1920	
	750	335	16	21	31	43	60	73.5	102	167	224	310	475	625	830	1070	1385	
2.5	1500	600	26	36	55	70	92	130	175	230	360	500	700	950	1280	1430		
	1000	400	17	25	38	53.5	66	94.5	116	188	244	390	505	700	900	1280	1530	
	750	300	12.5	18	28	38	48	65.5	91	150	200	280	380	500	660	950	1235	
2.8	1500	535	23	32	45	65	82	116	155	205	320	450	625	850	1020	1280		
	1000	360	15	22	34	40	59	84.5	103	168	218	310	420	625	715	1020	1360	
	750	270	11	16	25	33	43	58.5	81	135	180	250	305	450	540	760	1020	
3.15	1500	475	20	28	38	58	73	103	138	183	285	400	500	680	820	900		
	1000	315	13	18	26	36	52.5	75	92	150	195	275	335	450	640	810	1080	
	750	235	9.8	14	20	28	38.5	52	72	115	143	195	275	360	480	610	810	
3.55	1500	425	14.5	23	34	46.5	65	82	123	163	254	320	450	610	650	800		
	1000	280	10	16	23	32	42	53.5	82	134	175	220	300	400	510	650	860	
	750	210	7.5	11	18	25	34	41	64	92	128	175	220	310	380	485	645	
4	1500	375	11.5	18	24	33	46.5	65	96.5	140	190	285	400	490	580	715		
	1000	250	7	11.5	16	23	30	43	65	95	125	180	268	320	405	580	770	
	750	187	5.5	9	13	18	21.5	32	45.5	70	92	125	195	245	295	430	575	
4.5	1500	335	10	14.5	21	29.5	41.5	52	86	125	170	228	318	390	520	640		
	1000	220	6	10	14	20	27	34	58	80	110	160	214	250	360	465	690	
	750	166	4.9	8	11	16	19	25	40.5	55	82	110	155	197	264	380	515	
5	1500	300	9	13	18	26.5	37	46.5	68.5	95	150	185	250	310	465	570		
	1000	200	5.5	9	12.5	18	24	30	46	63	87	140	170	220	285	415	580	
	750	150	4.4	6	9.2	12.5	17	22	35	44	65	98	120	155	235	340	460	
5.6	1500	270			11	15	23	24	43	68	85	110	165	240	300			
	1000	180			7	10	15	16	29	40	55	65	100	155	230	325		
	750	134			5.2	8	11	12	20	30	40	47	70	110	168	270	370	
THERMAL CAPACITY P _{th} - KW - WITHOUT COOLING																		
1.25	1500		17	22	27	37	44	55	68	92	116	140	180	224	300	380		
	÷	1000		15	20	25	31	40	52	64	90	109	133	175	220	297	373	460
2.8	1500		14	19	24	30	38	47	60	82	104	128	169	216	293	364	450	
	÷	1000		13	18	23	28	38	49	61	81	100	128	176	216	293	373	
3.15	1500		12	15	21	24	33	46	58	75	96	121	168	208	284	360	455	
	÷	1000		10	13	16	21	30	44	57	69	92	112	160	192	270	352	445
5.6	1500																	
	÷	1000																
THERMAL CAPACITY P _{th} - KW - WITH FAN COOLING																		
1.25	1500		37	43	58	76	91	116	141	185	242	287	370	462	610	750		
	÷	1000		31	39	49	62	76	98	118	167	210	260	300	390	530	660	820
2.8	1500		27	35	45	55	67	87	107	153	190	240	287	360	500	600	770	
	÷	1000		34	37	53	67	82	107	135	176	216	280	350	440	585	750	930
3.15	1500		25	30	38	50	67	80	109	139	187	222	296	384	500	650	795	
	÷	1000		21	27	33	44	58	71	98	125	169	222	264	334	450	575	730
5.6	1500																	
	÷	1000																
THERMAL CAPACITY P _{th} - KW - WITH COOLING COIL																		
1.25	1500		30	34	46	61	73	93	113	145	190	224	290	360	470	575		
	÷	1000		25	31	39	50	61	78	94	130	164	203	234	305	405	505	630
5.6	1500		22	28	36	44	54	70	85	120	148	187	224	280	384	460		
	÷	1000																
THERMAL CAPACITY P _{th} - KW - WITH FAN AND COOLING COIL																		
1.25	1500		51	58	78	104	124	158	192	254	332	392	507	630	845	1035		
	÷	1000		42	53	66	85	103	132	160	228	287	355	410	535	730	910	1135
5.6	1500		37	48	61	75	91	119	144	210	259	327	392	490	690	830	1060	
	÷	1000																



H-BGB Series BEVEL GEARBOX DIMENSIONAL SHEET TYPE BS1



TYPE						INPUT SHAFT		OUTPUT SHAFT								FAN		MEAN WEIGHT (kg)	OIL CAP. (litres)					
	BS1					$i_1 = 1,25 + 3,55$	$i_2 = 4 + 5,6$	D	L	E	F	G	h	H	I	M	N			O	S	T		
Size	A	B	C	B ₁	C ₁	d	l	d	l	D	L	E	F	G	h	H	I	M	N	O	S	T		
80	240	176	150	330	300	25	50	20	40	35	80	200	120	20	120	240	233	130	16	11	293	210	50	2,5
90	260	194	164	360	325	30	60	25	50	40	80	220	130	20	130	260	270	145	16	13	340	210	60	3
100	280	216	184	390	350	35	80	30	60	45	100	235	140	22,5	140	280	300	160	18	13	370	210	78	3,6
110	300	234	200	410	370	40	80	35	80	50	100	250	150	25	150	300	330	175	18	13	400	280	105	4,5
125	330	264	224	460	415	45	100	40	80	55	110	275	165	27,5	165	330	360	190	20	17	430	280	140	6
140	360	286	244	500	450	50	100	45	100	60	120	300	180	30	180	360	390	200	22	17	480	350	200	8,5
160	400	320	280	550	500	55	110	50	100	70	140	330	200	35	200	400	430	225	22	17	520	350	270	11
180	440	360	315	600	540	60	120	55	110	80	170	360	220	40	220	440	470	250	27	22	560	350	360	16
200	490	400	355	670	610	65	120	60	120	90	170	400	245	45	245	490	520	280	27	22	610	420	500	22
225	550	460	410	750	680	75	140	65	120	100	210	450	275	50	275	550	580	320	33	27	670	420	650	28
250	610	500	450	820	750	90	170	75	140	110	210	500	305	55	305	610	640	350	33	27	740	600	940	42
280	680	554	490	910	830	100	210	80	170	120	210	560	340	60	340	680	720	380	42	33	830	600	1250	55
320	760	620	550	1000	910	110	210	90	170	140	250	630	380	65	380	760	820	420	42	33	930	600	1780	73
360	840	690	600	1100	1000	120	210	100	210	160	300	700	420	70	420	840	920	460	55	39	1040	750	2350	110
400	950	770	680	1230	1120	130	250	110	210	170	300	800	475	75	475	950	1040	500	55	39	1160	750	3200	160



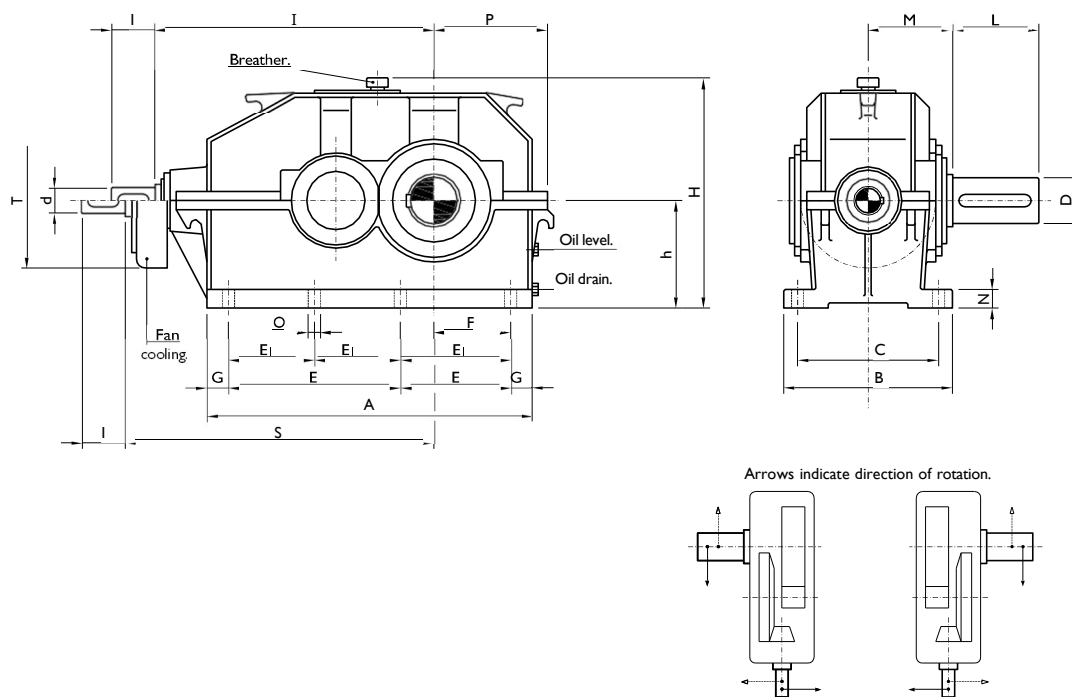
H-BGB Series POWER RATINGS TYPE BS2

NOM.RATIO	NOM. SPEEDS 1/MIN.		SIZE OF GEAR UNIT															
	iN	n ₁ N	112	125	140	160	180	200	225	250	280	320	360	400	450	500	560	
GEAR BOX RATING P _{IN} – KW																		
6.3	1500	240	27	44	63	91	113	165	240	355	455	605	785	1270	1830	2080	2308	
	1000	160	20	33	47	68	85	125	180	265	340	460	585	970	1360	1780	2180	
	750	120	16	23	39	54	71	105	145	208	270	375	485	790	1020	1430	1830	
7.1	1500	210	27	44	63	91	110	155	225	340	455	605	785	1180	1730	2080	2380	
	1000	140	20	30	47	68	84	112	170	260	340	460	585	885	1300	1780	2180	
	750	105	16	23	33	54	63	94	133	198	270	375	485	720	1020	1430	1830	
8	1500	188	27	40	56	81	108	145	205	320	430	605	745	1080	1620	2080	2380	
	1000	125	17	27	38	55	83	107	152	243	320	460	555	815	1240	1680	2180	
	750	94	13	20	29	41	56	85	124	185	240	338	460	655	950	1380	1780	
9	1500	167	24	36	50	73	103	135	190	285	390	540	670	970	1520	2030	2180	
	1000	111	15	24	34	49	75	100	136	217	290	410	500	750	1100	1550	1950	
	750	83	12	18	26	37	50	76	118	175	230	306	410	595	815	1185	1480	
10	1500	150	21	32	45	65	92	130	170	255	345	480	600	900	1350	1900	2180	
	1000	100	14	21	30	44	67	90	121	194	260	360	450	690	950	1250	1700	
	750	75	10	16	23	33	45	70	107	155	205	273	366	510	700	950	1280	
11.2	1500	134	19	29	40	58	81	117	153	228	320	430	555	825	1200	1550	1980	
	1000	89	12	19	27	40	60	81	108	173	230	320	400	630	820	1020	1370	
	750	67	9	14	20.5	30	40	63	95	138	183	240	330	465	600	780	1020	
12.5	1500	120	17	26	36	52	73	105	138	205	285	380	500	755	980	1260	1530	
	1000	80	11	17	24	36	54	73	97	138	205	260	360	485	680	830	1100	
	750	60	8	12.5	18.5	26	36	56	76	110	160	190	268	350	510	640	835	
14	1500	107	13	23	31	46	64	80	124	187	255	340	450	575	770	1000	1130	
	1000	71	8	15	21	32	43	53	86	110	163	205	320	410	515	680	895	
	750	53	6	11	15	22	32	36	60	78	114	143	235	310	400	510	685	
16	1500	94	10	17	24	37	52	60	100	133	204	260	400	475	600	850	980	
	1000	62	7	11	15	23	31	35	62	81	120	150	250	345	390	560	715	
	750	47	5	8	11	16	23	26	48	60	85	108	178	260	300	420	595	
18	1500	83	8	12	19	30	42	48	80	95	163	200	356	390	465	720	850	
	1000	56	5	8	12	16	22	24	45	60	88	110	195	290	295	460	570	
	750	41	4	6.3	8	11	16	18	38	46	63	81	134	220	230	346	515	

NOM.RATIO	INPUT SPEEDS 1/MIN.	SIZE OF GEAR UNIT															
		112	125	140	160	180	200	225	250	280	320	360	400	450	500	560	
THERMAL CAPACITY P _{th} – KW – WITHOUT COOLING																	
6.3	1500	27	33	40	52	68	95	131	147	179	228	285	368	446	570	698	
	÷	1000	25	30	38	50	65	90	115	141	173	217	280	353	436	565	688
11.2	750	22	27	37	48	61	84	110	136	163	212	270	342	430	555	683	
12.5	1500	25	29	38	50	65	90	115	141	173	222	275	353	436	565	688	
	÷	1000	23	26	36	47	57	82	110	131	168	212	270	347	430	555	677
18	750	20	24	34	43	52	77	105	126	158	207	265	342	425	550	672	
THERMAL CAPACITY P _{th} – KW – WITH FAN COOLING																	
6.3	1500	59	73	95	115	157	205	260	342	395	518	641	830	1026	1240	1548	
	÷	1000	55	66	86	105	147	184	238	316	364	467	570	725	861	1138	1445
11.2	750	50	58	78	100	131	157	212	270	311	415	518	641	809	984	1342	
12.5	1500	57	71	90	110	147	189	238	321	384	499	620	777	984	1190	1497	
	÷	1000	48	61	75	97	126	157	207	270	332	447	539	683	840	1035	1342
18	750	42	53	67	86	110	142	189	239	291	395	499	620	767	963	1240	
THERMAL CAPACITY P _{th} – KW – WITH COOLING COIL																	
6.3	1500	44	59	73	95	115	142	178	217	270	342	441	596	788	1010	1216	
	÷	1000	42	57	68	87	111	137	168	207	265	322	436	591	767	999	1205
18	750	39	53	63	84	109	136	163	203	260	311	425	586	740	968	1148	
THERMAL CAPACITY P _{th} – KW – WITH FAN AND COOLING COIL																	
6.3	1500	76	100	128	157	205	249	316	415	488	641	798	1055	1240	1548	2060	
	÷	1000	71	92	116	141	197	228	291	384	457	570	725	963	1190	1445	1960
18	750	67	84	106	136	179	207	265	336	410	513	672	887	1118	1395	1802	



H-BGB Series BEVEL HELICAL GEARBOX DIMENSIONAL SHEET TYPE BS2



TYPE	INPUT SHAFT																			OUTPUT SHAFT				FAN	MEAN WEIGHT (kg)	OIL CAP. (litres)
	A	B	C	d	I	d	I	D	L	E	E ₁	F	G	h	H	I	M	N	O	P	S	T				
BS2	$i_1 = 6,3 + 12,5$										$i_2 = 14 + 18$															
Size	A	B	C	d	I	d	I	D	L	E	E₁	F	G	h	H	I	M	N	O	P	S	T				
112	380	220	190	25	50	20	40	48	100	160		90	30	125	280	345	110	20	14	140	405	210	65	3		
125	420	240	210	30	60	25	50	55	110	180		105	30	140	310	395	120	20	14	155	465	210	90	5		
140	470	260	230	35	80	30	60	60	120	200		115	35	160	350	440	130	25	14	175	510	210	120	7		
160	540	290	250	40	80	35	80	70	140	225		120	45	180	380	490	145	30	18	190	560	280	170	9,5		
180	600	320	280	45	100	40	80	80	170	250		135	50	200	440	540	160	30	18	215	610	280	230	14		
200	660	350	300	50	100	45	100	90	170	280		155	50	225	480	590	175	38	22	240	680	350	300	18		
225	750	380	330	55	110	50	100	100	210	310		165	65	250	545	655	190	38	22	265	745	350	400	25		
250	820	430	370	60	120	55	110	110	210	345		185	65	280	590	720	215	50	27	290	810	350	550	35		
280	920	480	420	65	120	60	120	120	210	380		205	80	315	660	800	240	50	27	325	890	420	770	48		
320	1030	540	470	75	140	65	120	140	250	425		225	90	355	740	900	270	60	33	360	990	420	1050	66		
360	1150	580	510	90	170	75	140	160	300	475		250	100	400	825	1000	290	60	33	400	1110	600	1400	100		
400	1280	640	570	100	210	80	170	170	300	525		275	115	450	920	1120	320	70	33	440	1230	600	1900	150		
450	1440	740	650	110	210	90	170	190	350		400	320	120	500	1020	1270	360	70	39	490	1380	600	2650	200		
500	1600	820	720	120	210	100	210	220	350		440	340	140	560	1140	1420	400	80	39	550	1540	750	3600	270		
560	1780	900	790	130	250	110	210	250	410		500	395	140	630	1280	1600	440	80	45	610	1720	750	4800	400		



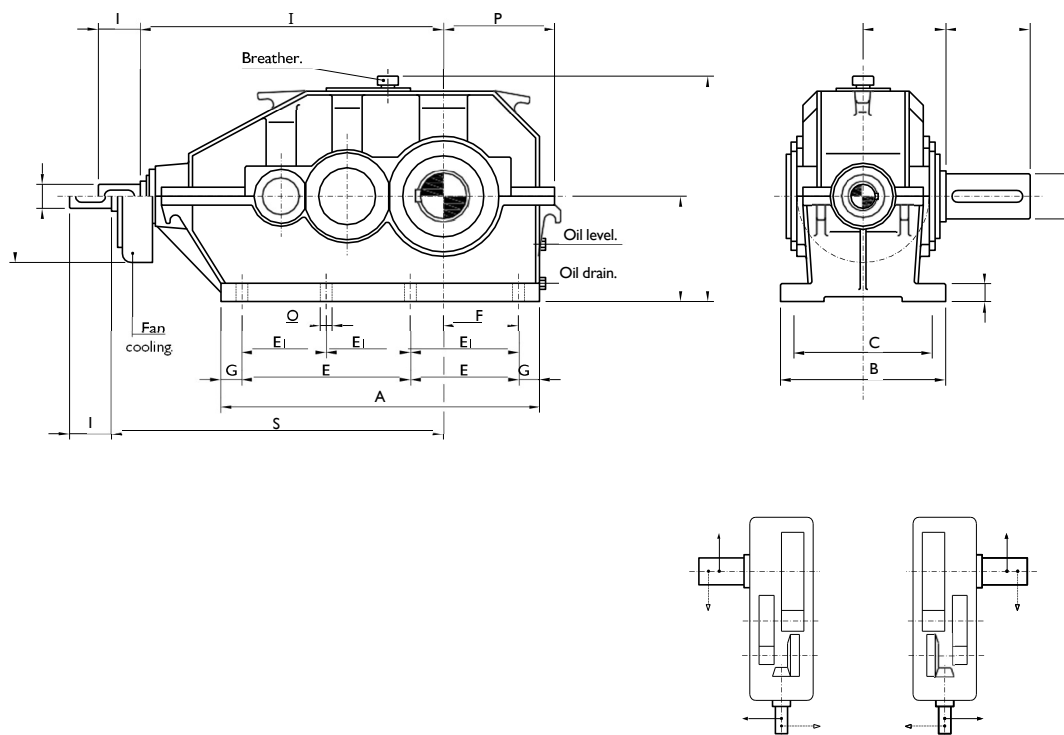
H-BGB Series POWER RATINGS TYPE BS3

NOM.RATIO	NOM. SPEEDS 1/MIN.		SIZE OF GEAR UNIT																		
	IN	n ₁ N	n ₂ N	112	125	140	160	180	200	225	250	280	320	360	400	450	500	560	630	710	800
GEAR BOX RATING P _{IN} - KW																					
14	1500	107	15	22	31	45	65	84	118	168	238	315	435	610	820	1340	1840	2490			
	1000	71	11	15	23	30	45	59	84	118	173	230	325	445	625	1000	1410	2190	2490	2840	
	750	54	8	12	17	24	34	44	69	89	143	187	267	355	505	825	1170	1740	2290	2590	
16	1500	94	14	22	29	44	65	79	118	158	228	300	435	590	820	1340	1840	2490			
	1000	63	9.8	13.5	20.5	30	42	59	84	113	168	225	325	435	625	1000	1410	2190	2490	2840	
	750	47	7	10.7	16	24	34	44	69	84	138	182	267	355	505	825	1170	1590	2290	2590	
18	1500	83	13	19.5	28	43	50	75	106	150	214	280	435	550	770	1340	1840	2490	2690	2840	
	1000	56	8.7	12	18.5	27	40	52.5	75	105	154	210	325	415	585	990	1390	1850	2490	2840	
	750	42	6.2	9.5	15	21.5	31	41	62.5	79	120	175	257	340	475	785	1110	1450	2170	2490	
20	1500	75	12	17.5	25	40	51.5	67	100	134	191	265	425	540	770	1310	1790	2450	2640	2840	
	1000	50	7.8	10.7	16.5	24	35.5	47	70	94	137.5	200	310	390	550	890	1260	1650	2390	2590	
	750	38	5.5	8.5	13.5	19	28	39	55	74	110	155	240	315	450	700	1000	1290	1920	2450	
22,4	1500	67	10.7	15.5	22	36	46	64	95	129	170	250	390	490	730	1200	1530	2160	2490	2840	
	1000	45	7	9.5	14.5	21.5	32	47	67	84	123	185	290	357	500	790	1120	1470	2120	2590	
	750	33	5	7.6	12	17	25	35	49	70	95	138	214	280	400	620	880	1150	1710	2200	
25	1500	60	9.5	13.8	19.5	32	41	60	85	120	152	224	350	440	650	1070	1460	1930	2490	2690	
	1000	40	6.2	8.5	13	19.5	28.5	42	60	75	110	165	260	318	450	705	1000	1310	2000	2500	
	750	30	4.5	6.8	10.7	15	22	31	44	61	85	123	191	250	360	550	785	1025	1520	1950	
28	1500	54	8.5	12.3	17.5	28	36.5	48	76	94	136	210	310	390	580	950	1300	1720	2390	2540	
	1000	36	5.5	7.6	11.5	17	25.5	33.5	53.5	67	98	147	230	284	405	630	890	1170	1790	2240	
	750	27	4	6	9.5	12	19.5	25	39	50	71.5	110	170	220	320	490	700	915	1350	1740	
31,5	1500	48	7.6	11	15.5	25	32.5	43	68	84	120	200	280	375	520	850	1160	1535	2220	2370	
	1000	32	4.9	6.8	10.3	15.5	22.5	30	48	60	87	131	205	254	360	560	795	1050	1600	2000	
	750	24	3.6	5.3	8.5	10.7	17.5	22	35	45	64	98	152	195	286	440	625	815	1200	1550	
35,5	1500	42	6.8	9.8	14	22	29	38.5	61	75	107	178	250	350	475	760	1035	1370	2110	2180	
	1000	28	4.4	6	9.2	13.8	20	27	43	53.5	77	117	183	226	322	500	710	935	1430	1780	
	750	21	3.1	4.7	7.5	9.5	15.5	20.5	31	40	57	87.5	135	174	256	390	560	725	1070	1380	
40	1500	38	6.1	8.7	12.5	18	26	34.4	54.5	67	95	159	224	310	425	680	925	1290	1900	2080	
	1000	25	3.9	5.3	8.2	12.3	18	24	38	48	69	105	160	200	290	450	635	835	1280	1600	
	750	19	2.8	4.2	6.7	8.5	13.8	19.5	28	36	51	78	120	155	228	350	500	690	950	1230	
45	1500	33.5	5.4	7.6	11.2	16	23	32	48.5	67	85	142	200	275	380	605	825	1150	1700	2040	
	1000	22	3.5	4.7	7.3	11	16	21.4	34	43	61	94	143	180	260	400	565	745	1140	1430	
	750	16.6	2.5	3.7	6	7.6	12.3	17.5	25	32	45.5	70	107	138	204	312	445	580	850	1100	
50	1500	30	4.8	6.8	10	14	20.5	30	43	53.5	76	127	180	245	340	540	735	1030	1520	1950	
	1000	20	3.1	4.2	6.5	9.8	14.3	19	30	38.5	54.5	84	128	160	232	360	500	665	1030	1280	
	750	15	2.2	3.3	5.3	6.8	11	15.5	22	28.5	40.5	62.5	95	123	182	280	400	525	760	980	
56	1500	27	4.3	6	9	12.5	18.5	27	38.5	48	68	113	160	220	304	480	655	920	1350	1550	
	1000	18	2.8	3.7	5.8	8.7	12.8	17	27	34.5	48.5	75	114	143	207	320	450	595	915	1110	
	750	13.4	2	3	4.7	6	9.8	14	19.5	25.5	36	56	85	110	162	250	357	470	680	830	
63	1500	24	3.8	5.3	8	11	16.5	24	34.5	43	60.5	100	143	195	272	430	585	820	1200	1150	
	1000	16	2.5	3.3	5.2	7.7	11.5	15	24	30.5	43	67	102	128	185	286	400	530	815	900	
	750	12	1.7	2.7	4.2	5.3	8.7	12.5	17.5	22.5	32	50	76	98	145	222	318	420	610	660	
71	1500	21	3.4	4.7	7	9.8	14.7	21.4	31	38	54	89	128	175	242	385	520	730	980	1030	
	1000	14	2.2	3	4.6	6.9	10.3	13.5	21.4	27.5	38	60	81	114	165	256	360	475	650	715	
	750	10.5	1.5	2.4	3.7	4.7	7.7	11	15.5	20	28.5	45	60	87	110	198	284	375	500	590	
80	1500	18.8	3	4.2	6	8.7	12	19	28	38	48	71	115	155	216	344	465	600	850	1030	
	1000	12.5	1.9	2.7	4.1	6.1	8	12	19	27.5	34	48	72	102	147	228	320	425	580	715	
	750	9.4	1.4	2.1	3.3	4.2	6.1	9.8	14	18	25.5	36	53.5	77	110	177	254	300	420	590	
90	1500	16.7	2.7	3.7	5.3	7.8	10.5	17	25	34	43	63.5	103	140	193	298	370	535	780	920	
	1000	11.1	1.7	2.4	3.6	5.4	7	10.7	17	24.5	30	43	64.5	91	115	180	255	340	520	640	
	750	8.3	1.2	1.9	2.9	3.7	5.5	8.7	12.5	16	22.5	32	48	68	85	126	190	268	405	505	
100	1500	15		2.8	4.7	7	9.5	15	20	30	34	50	82	115	140	225	320	430	650	820	
	1000	10		1.9	3.2	4.8	6.2	9.5	13	19.5	21	30	51	64	82	130	201	290	415	550	
	750	7.5		1.5	2.5	3.3	4.9	7.5	10	14	16	22.5	37	47	61	100	140	220	325	435	

NOM.RATIO	INPUT SPEEDS 1/MIN.		SIZE OF GEAR UNIT																			
	IN	n ₁ N	112	125	140	160	180	200	225	250	280	320	360	400	450	500	560	630	710	800		
THERMAL CAPACITY P _{th} - KW - WITHOUT COOLING																						
14	1500		22	27	33	44	53	68	89	107	140	176	212	260	316	401	504	625	788	994		
	÷	1000		20	24	30	40	51	63	82	105	126	166	201	249	304	389	498	617	767	973	
	750		18	21	27	36	47	58	76	96	100	124	160	192	240	293	383	482	607	746	952	
40	1500		19	25	31	40	50	63	79	101	130	165	200	251	311	394	491	617	777	984		
	÷	1000		18	22	28	38	48	60	78	99	121	157	191	230	288	378	475	602	756	963	
	750		16	20	25	33	44	57	74	97	115	147	179	222	275	363	460	581	730	931		
THERMAL CAPACITY P _{th} - KW - WITH FAN COOLING																						
14	1500		52	65	84	105	126	157	205	233	302	395	483	570	741	931	1201	1497				
	÷	1000		50	63	80	95	121	142	184	218	271	360	426	488	618	798	1035	1342			
	750		48	61	76	94	115	131	168	199	240	313	374	436	550	720	953	1232				
35.5	1500		49	63	80	100	120	147	189	220	266	332	405	499	641	788	984	1334				
	÷	1000		47	59	76	90	113	136	173	204	251	301	364	467	602	725	924	1221			
	750		45	55	70	84	105	126	164	189	230	280	321	425	539	678	893	1137				
THERMAL CAPACITY P _{th} - KW - WITH COOLING COIL																						
14	1500		74	88	102	128	148	173	217	256	325	330	381	504	560	668	709</					



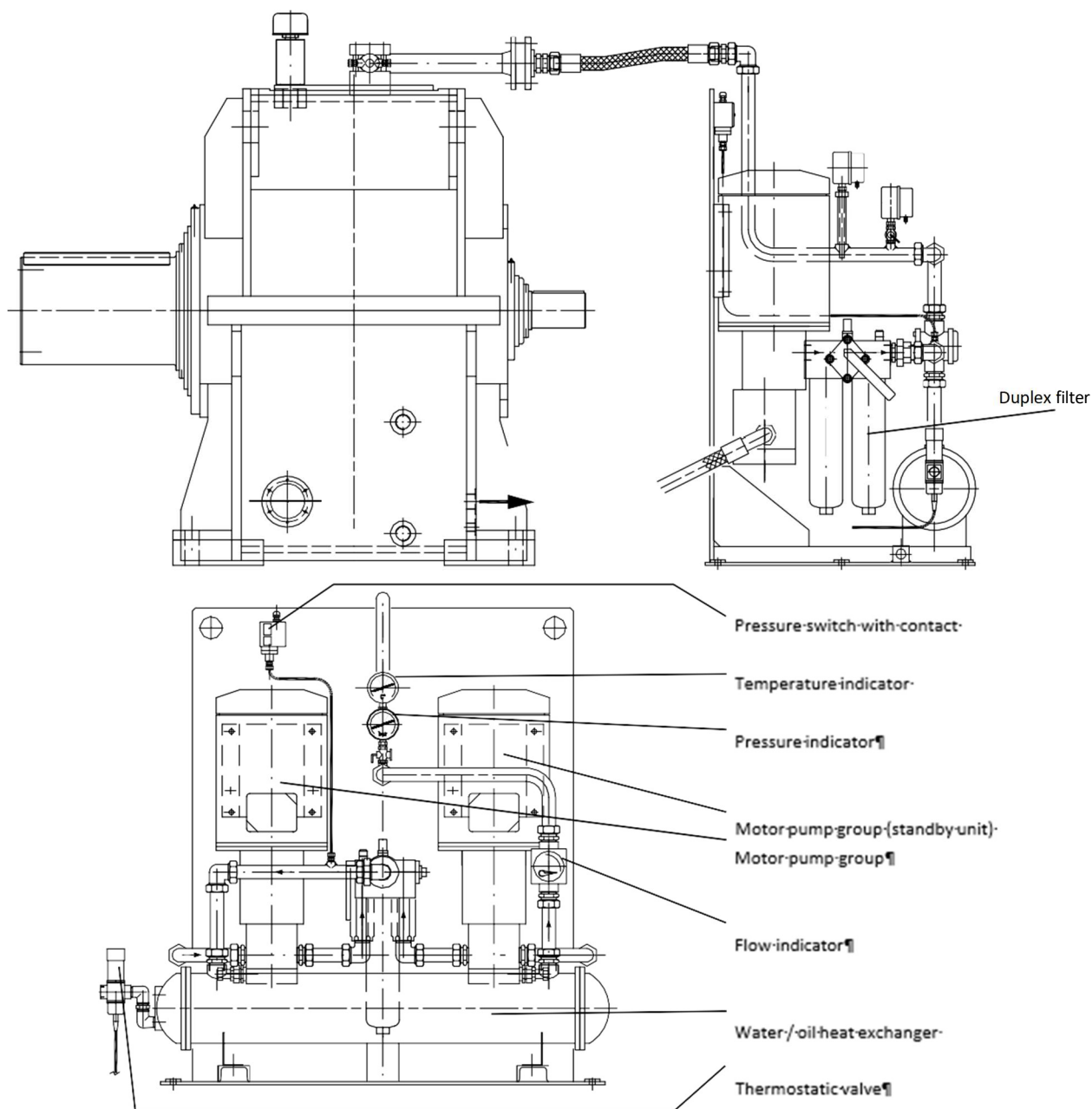
H-BGB Series BEVEL HELICAL GEARBOX DIMENSIONAL SHEET TYPE BS3



TYPE	INPUT SHAFT																			OUTPUT SHAFT		FAN	MEAN WEIGHT (kg)	OIL CAP. (litres)
	BS3			$i_q = 14 + 4S$						$i_q = 50 + 100$						D	L	S	T					
Size	A	B	C	d	I	d	I	D	L	E	E ₁	F	G	h	H	I	M	N	O	P	S	T		
112	380	220	190	16	30	16	30	48	100	160		90	30	125	280	372	110	20	14	140	432	170	70	4
125	420	240	210	20	40	20	40	55	110	180		105	30	140	310	410	120	20	14	155	465	170	100	5,7
140	470	260	230	20	40	20	40	60	120	200		115	35	160	350	450	130	25	14	175	510	170	130	8,5
160	540	290	250	25	50	20	40	70	140	225		120	45	180	380	505	145	30	18	190	575	210	180	10
180	600	320	280	30	60	25	50	80	170	250		135	50	200	440	575	160	30	18	215	645	210	240	15
200	660	350	300	35	80	30	60	90	170	280		155	50	225	480	640	175	38	22	240	710	210	315	20
225	750	380	330	40	80	35	80	100	210	310		165	65	250	545	715	190	38	22	265	785	280	430	28
250	820	430	370	45	100	40	80	110	210	345		185	65	280	590	790	215	50	27	290	860	280	575	38
280	920	480	420	50	100	45	100	120	210	380		205	80	315	660	870	240	50	27	325	960	350	800	55
320	1030	540	470	55	110	50	100	140	250	425		225	90	355	740	975	270	60	33	360	1065	350	1100	70
360	1150	580	510	60	120	55	110	160	300	475		250	100	400	825	1080	290	60	33	400	1170	350	1450	105
400	1280	640	570	65	120	60	120	170	300	525		275	115	450	920	1200	320	70	33	440	1290	420	2000	160
450	1440	740	650	75	140	65	120	190	350		400	320	120	500	1020	1350	360	70	39	490	1440	420	2700	215
500	1600	820	720	90	170	75	140	220	350		440	340	140	560	1140	1500	400	80	39	550	1610	600	3800	290
560	1780	900	790	100	210	80	170	250	410		500	395	140	630	1280	1680	440	80	45	610	1790	600	5000	430
630	2000	1000	880	110	210	90	170	300	500		560	440	160	710	1420	1900	490	110	45	675	2010	600	6900	510
710	2230	1140	1020	120	210	100	210	340	550		630	510	170	800	1600	2130	560	110	45	760	2250	750	9400	800
800	2500	1300	1170	130	250	110	210	400	650		710	595	185	900	1800	2400	640	110	52	860	2520	750	13500	1000



H-BGB Series - Lubrication unit and oil system with or without cooling



Lube oil and systems

H-BGB SERIES gearboxes are designed for oil lubrication with mineral EP lube oils with a viscosity in the range of ISO VG 68 to 320, operating at temperatures of around 40 to 50°C. Depending on thermal power, the lubrication system can vary from simple oil sump lubrication to forced lubrication systems with an oil pump, a bypass filter and an oil cooler.



H-BGB Series – Approved lubricants

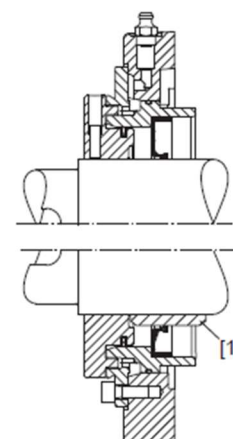
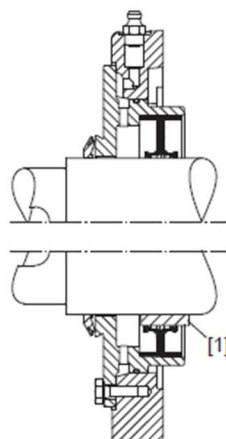
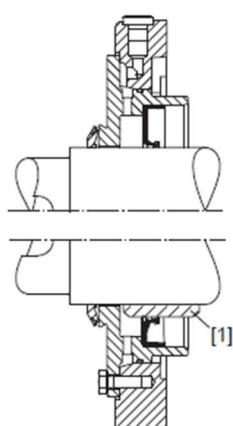
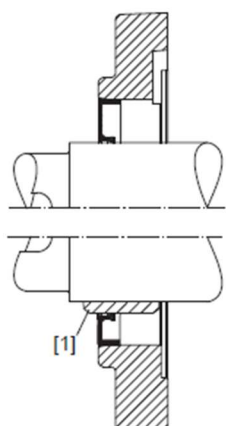
TYPE OF LUBRICANT	E.P. EXTREME PRESSURE OILS (SULPHUR - PHOSPHOROUS TYPE)						
ISO RATING	VG - 68	VG - 100	VG - 150	VG - 220	VG - 320	VG - 460	VG - 680
AGMA NUMBER	EP - 2	EP - 3	EP - 4	EP - 5	EP - 6	EP - 7	EP - 8a
VISCOSITY TO 40 °C - cSt	64.5	97.5	142.5	209	304	437	646
VISCOSITY TO 50 °C - E / cSt	5,3 / 42	7,7 / 61	12 / 92	16 / 125	22,5 / 180	31,3 / 250	45 / 360
MAX. OPERATIVE TEMP.	105 °C 220 °F	105 °C 220 °F	105 °C 220 °F	105 °C 220 °F	105 °C 220 °F	105 °C 220 °F	105 °C 220 °F
AGIP - BLASIA	57	77	107	187	237	307	457
IP – MELLANA OIL	68		150	220	320	460	680
MOBIL -MOBILGEAR	626		629	630	632	634	636
ESSO - SPARTAN	EP68	EP100	EP1 50	EP220	EP320	EP460	EP680
SHELL - OMALA	68	100	15 0	220	320	460	680
BP - ENERGOL	GR-XP 68	GR-XP 100	GR- XP 150	GR-XP 220	GR-XP 320	GR-XP 460	GR-XP 680
TOTAL - CARTER	EP 40		EP7 0	EP100	EP140	EP320	EP680



H-BGB Series - Sealings

Input shaft

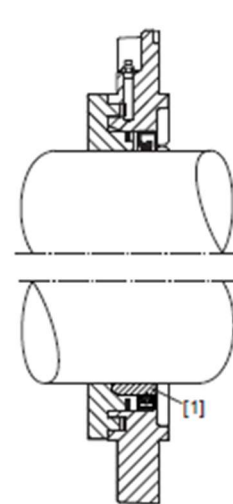
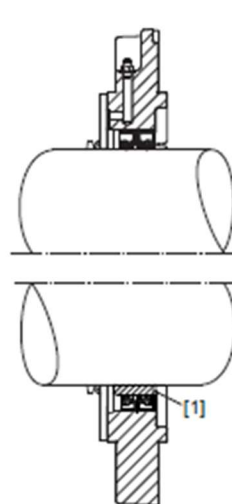
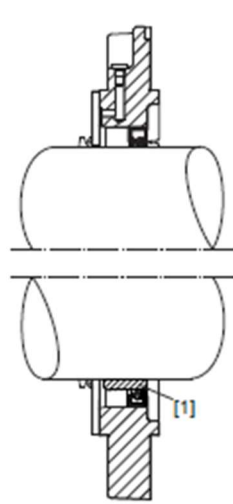
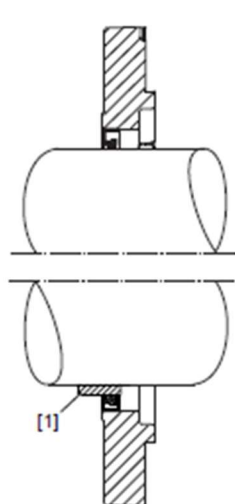
STANDARD	DUST-PROTECTED	DUST-PROTECTED REGREASEBLE	Radial labyrinth (TACONITE)
Single seal with dust protection lip	Single seal with dust protection cover	Double lip seal with dust protection cover	Single or double oil lip seal with radial labyrinth
Normal environment	Medium dust load	High dust load	Very High dust load



[1] With oil seal speedy sleeve as option

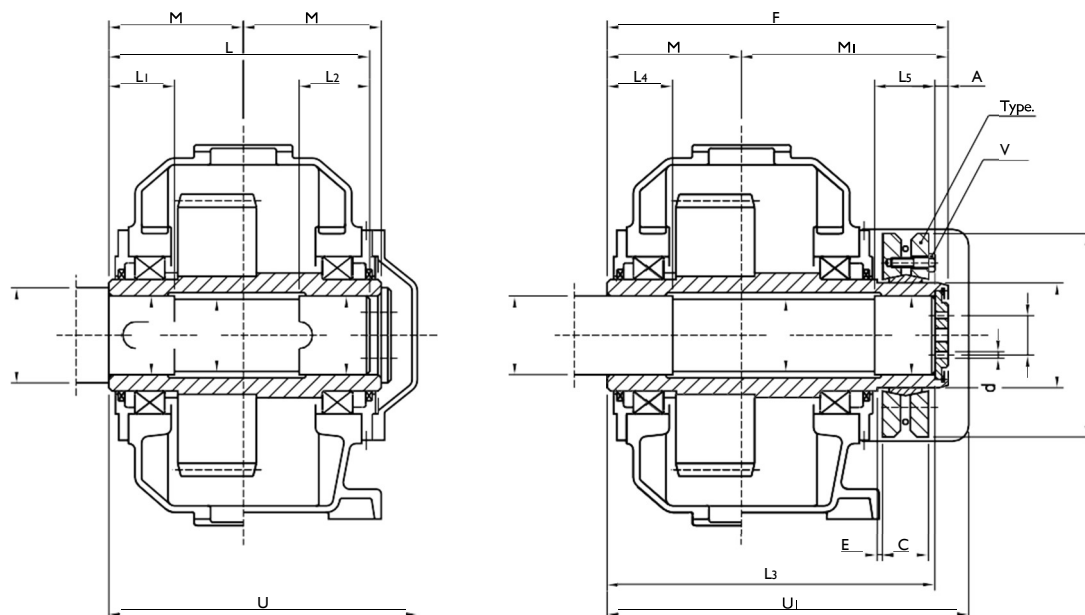
Standard sealing material is FKM according to application details can be used NBR or PFFE

Output shaft





H-BGB Series – Hollow shaft



SHRINK DISK VERSION																				KEY VERSION				
Unit Size	Type	M _s N _m	M _t N _m	A	B	C	E	d	F	D h ₆	D ₁ h ₆	D ₂	D ₃	M	M ₁	L ₃	L ₄	L ₅	U ₁	D _m	L	L ₁	L ₂	U
112										55				110						65	218	56	54	240
125										60				120						70	238	60	58	260
140										70				130						80	258	65	63	282
160	110-72	5.8	900	15	40	49	8	9	363	80	82	110	185	145	218	348	75	80	380	90	287	75	72	315
180	125-72	5.8	1300	15	45	53	11	9	400	90	92	125	215	160	240	385	80	90	420	100	317	80	77	344
200	140-71	10	1760	17	50	58	9	11	435	100	104	140	230	175	260	418	86	95	455	110	347	86	83	378
225	155-71	10	2500	17	55	62	10	11	470	110	115	155	263	190	280	453	93	102	490	120	377	93	90	408
250	165-71	24	3500	24	60	68	8	13	530	120	125	165	290	215	315	506	105	110	550	130	427	105	102	460
280	185-71	24	6000	24	70	85	8	13	595	140	145	185	330	240	355	571	116	125	615	150	476	116	112	515
320	220-71	24	10000	24	90	103	11	17	680	160	165	220	370	270	410	656	130	150	700	180	536	130	126	575
360	240-71	47	12000	24	95	107	9	17	720	170	180	240	405	290	430	696	135	150	745					
400	260-71	47	16400	24	100	119	11	22	795	190	200	260	430	320	475	771	150	165	820					
450	300-71	47	26200	30	120	140	10	22	900	230	240	300	485	360	540	870	165	185	925					
500	340-71	47	39400	33	130	155	18	27	1010	250	260	340	570	400	610	977	175	210	1035					
560	380-71	47	64000	33	160	163	13	27	1090	300	310	380	645	440	650	1057	190	220	1115					
630	420-71	82	78000	40	170	184	15	33	1220	330	340	420	690	490	730	1180	210	240	1250					
710	460-71	82	107000	40	200	192	10	33	1360	370	380	460	770	560	800	1320	240	260	1390					
800	500-71	82	152000	50	220	213	15	33	1560	410	420	500	850	640	920	1510	290	310	1590					



SD



SD Consulting SRL - Eccellenza tecnica e soluzioni all'avanguardia per le trasmissioni meccaniche nell'industria pesante.

Contatti

Tel: +39 392 431 4682
Email: stefania@pt-trading.it
Sede operativa: Via Talete, 47, Brugherio (MB)

Legal

© Copyright SD Consulting SRL. Tutti i diritti riservati.
PIVA 12345678901

